



JAY R. SMITH MFG. CO.
 DIVISION OF SMITH INDUSTRIES, INC.
 POST OFFICE BOX 3237
 MONTGOMERY, ALABAMA 36109-0237 (USA)
 TEL: 334-277-8520 FAX: 334-272-7396 www.jrsmith.com

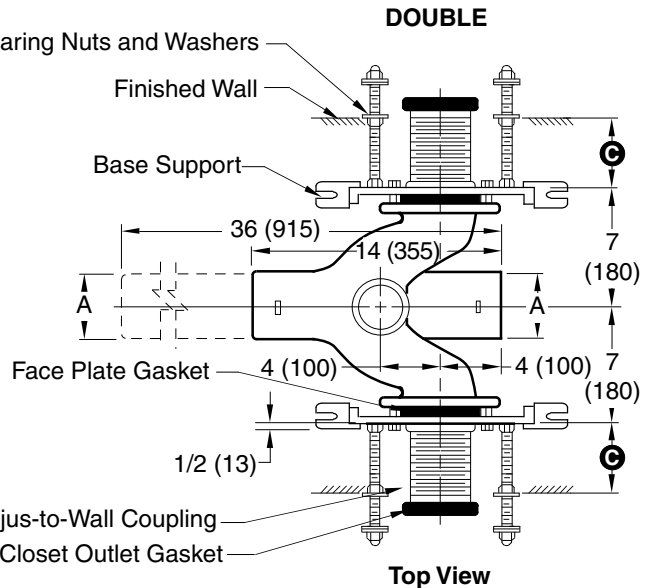
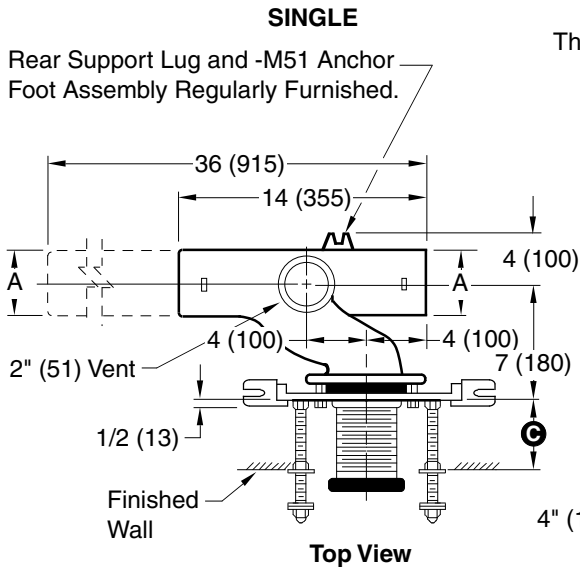


MEMBER OF:



LOCATION

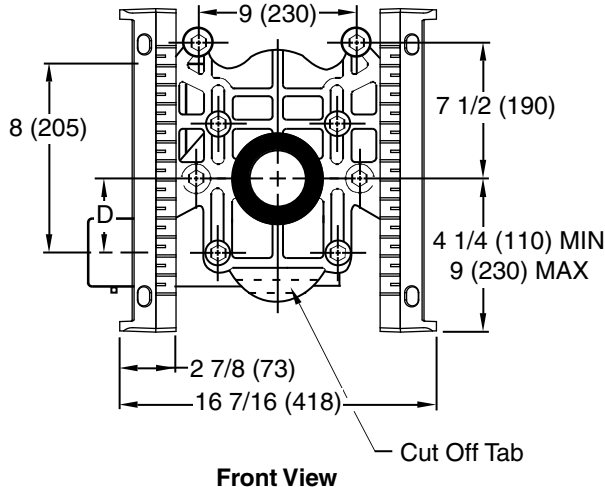
ADJUSTABLE FIXTURE SUPPORTS FOR SIPHON JET WATER CLOSETS



NOTE: Base support must be securely anchored to floor (with one 1/2" (13) bolt per base support provided by contractor).

NOTE: All single supports shall have the rear support lug anchored by contractor to assure a rigid installation. The rear support completes the 3 point anchoring system for ultimate stability of the installation.

NOTE: Dimensions shown in parentheses are in millimeters.

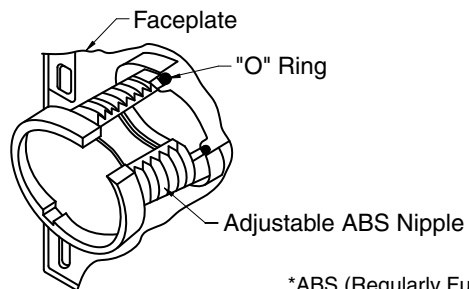


A SIZE	D	
	MIN	MAX
4 (100)	5/8 (16)	3 1/8 (79)
5 (125)	5/8 (16)	3 1/8 (79)

NOTE: When nipple lengths between 3 1/4"(83) and 9 3/4"(247) are specified, the 10"(255) nipple will be supplied. The threaded end of nipple must be cut to specified length by others.

LENGTH	MIN.	MAX.
10(255)	8 3/4"(222)	9 3/4"(247)

- Fig. 0210LY (-M54-M58) . . . NO-HUB Left Hand
- Fig. 0210RY (-M54-M58) . . . NO-HUB Right Hand
- Fig. 0210DY (-M54-M58) . . . NO-HUB Double
- Fig. 0220LY (-M54-M58) . . . NO-HUB Left Hand Long Barrel
- Fig. 0220RY (-M54-M58) . . . NO-HUB Right Hand Long Barrel
- Fig. 0220DY (-M54-M58) . . . NO-HUB Double Long Barrel



*ABS (Regularly Furnished).

DRAWING NUMBER
S0210Y/0220Y (-M54-M58)

SIZE
A

SCALE:
NONE

DATE:
12/09/04

APPROVED BY:
AM

CHECKED BY:
AM

DRAWN BY:
JJ

FIGURE NUMBER
0210Y,0220Y (-M54-M58)

WE CAN ASSUME NO RESPONSIBILITY FOR USE OF SUPERSEDED OR VOID DATA

DIMENSIONS ARE SUBJECT TO MANUFACTURERS TOLERANCE AND CHANGE WITHOUT NOTICE

REV.	DATE	DESCRIPTION	BY	CKD. BY
A	3-14-05	Revised Dwg. & Note	RN	CL

WEIGHT POUNDS	VOLUME CUBIC FEET	FIGURE NUMBER
		0210Y,0220Y (-M54-M58)