

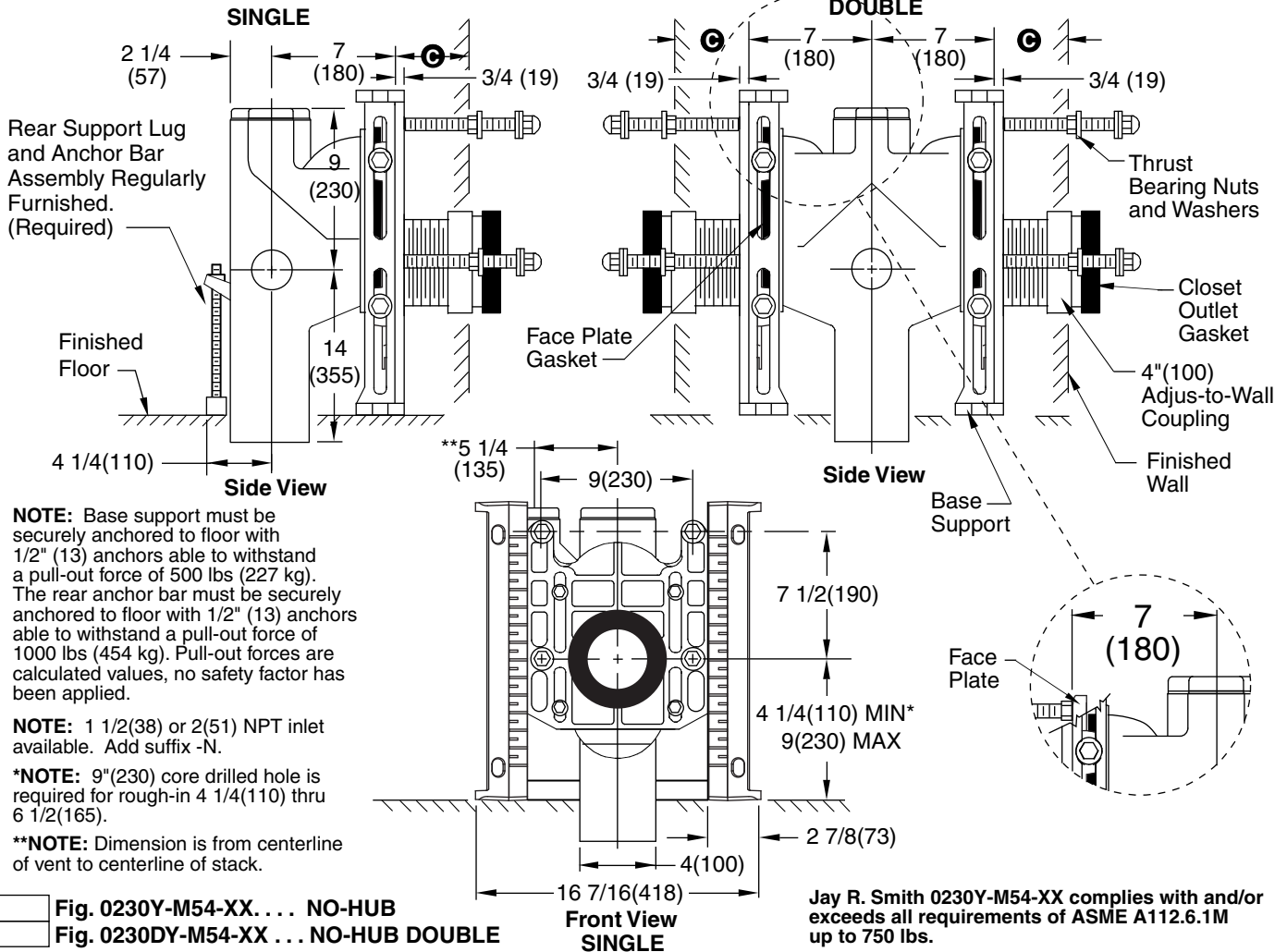


MEMBER OF:

LOCATION

ADJUSTABLE FIXTURE SUPPORTS FOR SIPHON JET WATER CLOSETS

NO-HUB VERTICAL FITTINGS EXTRA HEAVY DUTY - 750 LBS.



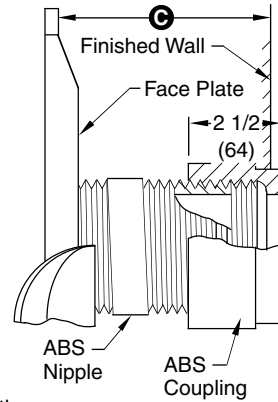
⊙ DIMENSION - ADJUS-TO-WALL TYPE OUTLET CONNECTION

The Smith Adjus-to-Wall outlet connection provides adjustment at the face of the wall at the time the fixture is set; thus, compensating for wall construction variations. The ⊙ dimension is measured from the front of the face plate to the finished wall. To properly determine the length of nipple required, deduct 1"(25) from the ⊙ dimension. The Adjus-to-Wall coupling will provide 1/2"(13) horizontal adjustment in either direction with the coupling extended 5/16"(8) past face of the finished wall.

⊙ dimension = 4"(100) (regularly furnished) consisting of nipple and Adjus-to-Wall coupling permitting adjustment from 3"(76) min. to 4"(100) max.

NOTE: When nipple lengths between 3 1/4"(83) and 8 1/4"(210) are specified, the 8 1/4"(210) nipple will be supplied. Nipple must be cut to specified length by others.

NOTE: Dimensions shown in parentheses are in millimeters.



NIPPLE LENGTHS AVAILABLE

LENGTH	MIN.	⊙	MAX.
2 1/2(64)	2 1/4(57)	3 1/4(83)	
*3 1/4(83)	3(76)	4(100)	
*8 1/4(210)	8(205)	9(230)	
10(255)	9 3/4(250)	10 3/4(275)	
12(305)	11 3/4(300)	12 3/4(325)	
15(380)	14 3/4(375)	15 3/4(400)	
18(455)	17 3/4 (450)	18 3/4(475)	

*ABS (Regularly Furnished) other lengths PVC.

DRAWING NUMBER: S0230Y-M54-XX
 SIZE: A
 SCALE: NONE
 DATE: 10/08/07
 APPROVED BY: CL
 CHECKED BY: CL
 DRAWN BY: JJ
 FIGURE NUMBER: 0230Y-M54-XX
 DIMENSIONS ARE SUBJECT TO MANUFACTURERS TOLERANCE AND CHANGE WITHOUT NOTICE
 WE CAN ASSUME NO RESPONSIBILITY FOR USE OF SUPERSEDED OR VOID DATA

C	11/20/09	3/4 (19) was 1/2 (13)	JJ	CL
B	5-13-08	Revised Note	TBW	CL
A	11/20/07	Moved Dimensions	JJ	CL
REV.	DATE	DESCRIPTION	BY	CKD. BY

WEIGHT POUNDS	VOLUME CUBIC FEET
---------------	-------------------

FIGURE NUMBER
0230Y-M54-XX