

INLET STACK FITTINGS FOR HUB AND SPIGOT SYSTEMS

FOR USE WITH FLOOR MOUNTED BACK OUTLET WATER CLOSETS

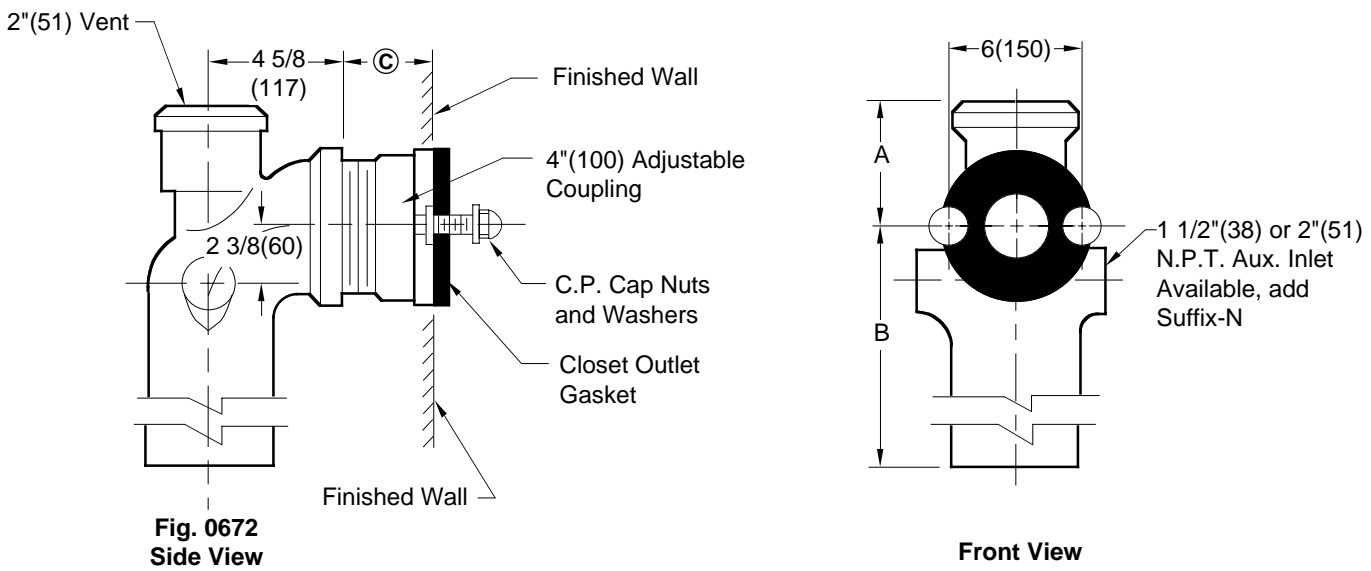


Fig. 0672 Side View

Front View

- Fig. 0672 04"(100) CAULK Long Barrel w/2"(51) Vent
- Fig. 0672B 04"(100) THREAD w/2"(51) Vent
- Fig. 0674 04"(100) CAULK Long Barrel w/4"(100) Vent
- Fig. 0674B 04"(100) THREAD w/4"(100) Vent

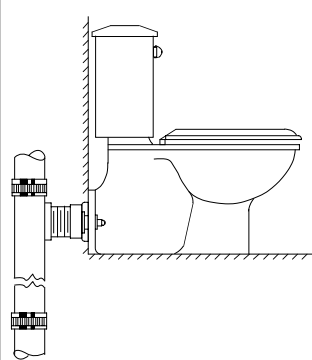
Fig. No.	Service		Threaded	
	A	Weight B	A	B
0672	5(125)	8(205)	5(125)	6(150)
0674	5 1/2(140)	8(205)	5 1/2(140)	6(150)

© Dimension is regularly furnished 4"(100) long. Coupling provides 3/4"(19) adjustment in either direction.

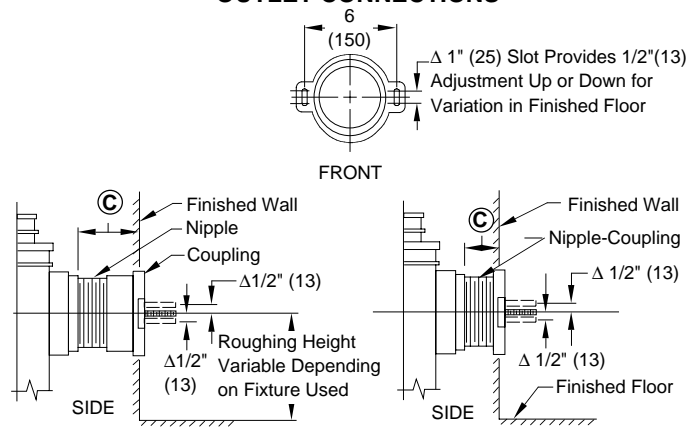
NOTE: Dimensions shown in parentheses are in millimeters.

The water closet gasket regularly furnished is made of molded neoprene and designed to fit water closet outlet dimensions and configurations shown in ANSI Standard A112.19.2M-1982, Figure 13B. If gasket is not found to be compatible to fixture due to nonconformance of said fixture to ANSI A112.19.2M, then fixture manufacturer shall be consulted for a suitable gasket recommendation. Jay R. Smith assumes no liability for connections to fixtures which do not conform to these standards.

TYPICAL APPLICATION



OUTLET CONNECTIONS



REGULARLY FURNISHED

TYPE 2M (When Specified)

NIPPLE LENGTHS AVAILABLE

NIPPLE LENGTH	AVAILABLE	
	MIN	MAX
2 1/2 (64)	2 3/4 (70)	3 3/4 (95)
*3 1/4 (83)	3 (76)	4 1/2 (115)
4 1/2 (115)	4 1/4 (110)	5 3/4 (145)
5 1/4 (135)	5 (125)	6 1/2 (165)
6 1/4 (160)	6 (150)	7 1/2 (190)
7 (180)	6 3/4 (170)	8 1/4 (210)
8 1/4 (210)	8 (205)	9 1/2 (240)
10 (255)	9 3/4 (250)	11 1/4 (285)
12 (305)	11 3/4 (300)	13 1/4 (335)
15 (380)	14 3/4 (375)	16 1/4 (415)
18 (455)	17 3/4 (450)	19 1/4 (490)

* Regularly Furnished

DRAWING NUMBER: S0672
 SIZE: A
 SCALE: NONE
 DATE: 10-7-70
 APPROVED BY: [Signature]
 CHECKED BY: RP
 DRAWN BY: RK
 FIGURE NUMBER: 0672, 0674

WE CAN ASSUME NO RESPONSIBILITY FOR USE OF SUPERSEDED OR VOID DATA
 DIMENSIONS ARE SUBJECT TO MANUFACTURERS TOLERANCE AND CHANGE WITHOUT NOTICE

REV.	DATE	DESCRIPTION	BY	CKD. BY	WEIGHT POUNDS	VOLUME CUBIC FEET	FIGURE NUMBER
D	6-10-97	Chg'd Table	EMB				0672, 0674
C	3-27-97	Added Millimeters	EMB	BS			
B	6-22-94	Revised	EMB	BS			
A	7-30-93	Submittal Update	EMB	BS			