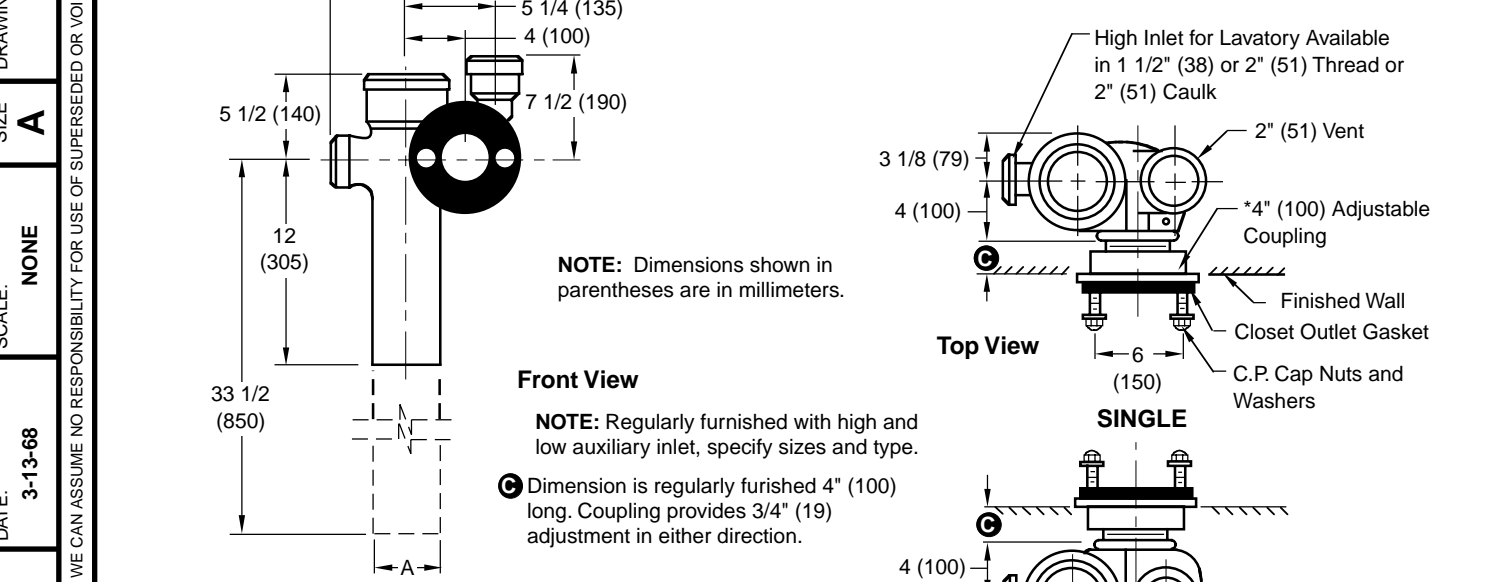


# VERTICAL OFFSET WASTE FITTING WITH HIGH SIDE INLET

FOR USE WITH FLOOR MOUNTED BACK OUTLET CLOSET AND LAVATORY



**NOTE:** Dimensions shown in parentheses are in millimeters.

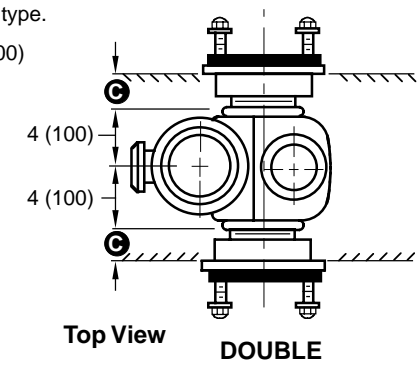
**Front View**

**NOTE:** Regularly furnished with high and low auxiliary inlet, specify sizes and type.

Ⓢ Dimension is regularly furnished 4" (100) long. Coupling provides 3/4" (19) adjustment in either direction.

A (Pipe Size) = 4" (100)

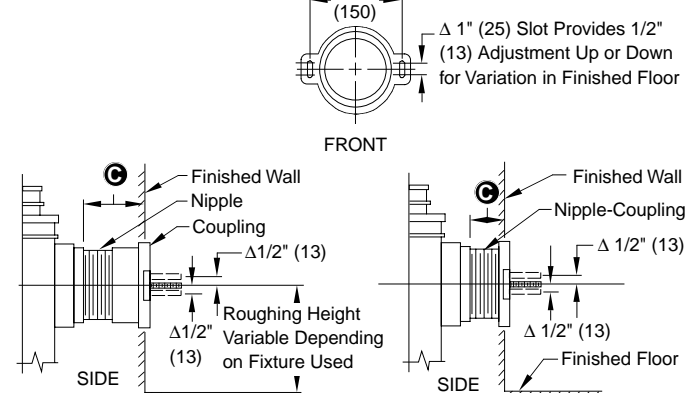
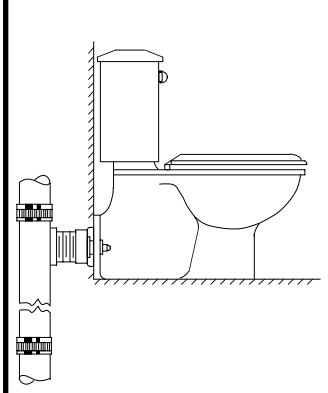
- Fig. 0679L ... LEFT HAND
- Fig. 0679R ... RIGHT HAND (SHOWN)
- Fig. 0679D ... DOUBLE
- Fig. 0686L ... LEFT HAND LONG BARREL
- Fig. 0686R ... RIGHT HAND LONG BARREL
- Fig. 0686D ... DOUBLE LONG BARREL



**Top View SINGLE**  
**Top View DOUBLE**

The water closet gasket regularly furnished is made of molded neoprene and designed to fit water closet outlet dimensions and configurations shown in ANSI Standard A112.19.2M-1982, Figure 13B. If gasket is not found to be compatible to fixture due to nonconformance of said fixture to ANSI A112.19.2M, then fixture manufacturer shall be consulted for a suitable gasket recommendation. Jay R. Smith assumes no liability for connections to fixtures which do not conform to these standards.

**0679 and 0686 SERIES** **TYPICAL APPLICATION** **OUTLET CONNECTIONS** **NIPPLE LENGTHS AVAILABLE**



NIPPLE LENGTH	NIPPLE LENGTHS AVAILABLE	
	MIN	MAX
2 1/2 (64)	2 3/4 (70)	3 3/4 (95)
* 3 1/4 (83)	3 (76)	4 1/2 (115)
4 1/2 (115)	4 1/4 (110)	5 3/4 (145)
5 1/4 (135)	5 (125)	6 1/2 (165)
6 1/4 (160)	6 (150)	7 1/2 (190)
7 (180)	6 3/4 (170)	8 1/4 (210)
8 1/4 (210)	8 (205)	9 1/2 (240)
10 (255)	9 3/4 (250)	11 1/4 (285)
12 (305)	11 3/4 (300)	13 1/4 (335)
15 (380)	14 3/4 (375)	16 1/4 (415)
18 (455)	17 3/4 (450)	19 1/4 (490)

\* Regularly Furnished

FIGURE NUMBER	B	4-11-96	Added Millimeters Submittal Update	EMB	BS	WEIGHT POUNDS	VOLUME CUBIC FEET	FIGURE NUMBER
	A	9-29-94						
REV.	DATE	DESCRIPTION	BY	CKD. BY				

DRAWING NUMBER: S0679, SIZE: A, SCALE: NONE, DATE: 3-13-68, APPROVED BY: RP, CHECKED BY: RP, DRAWN BY: RD, DIMENSIONS ARE SUBJECT TO MANUFACTURERS TOLERANCE AND CHANGE WITHOUT NOTICE, WE CAN ASSUME NO RESPONSIBILITY FOR USE OF SUPERSEDED OR VOID DATA