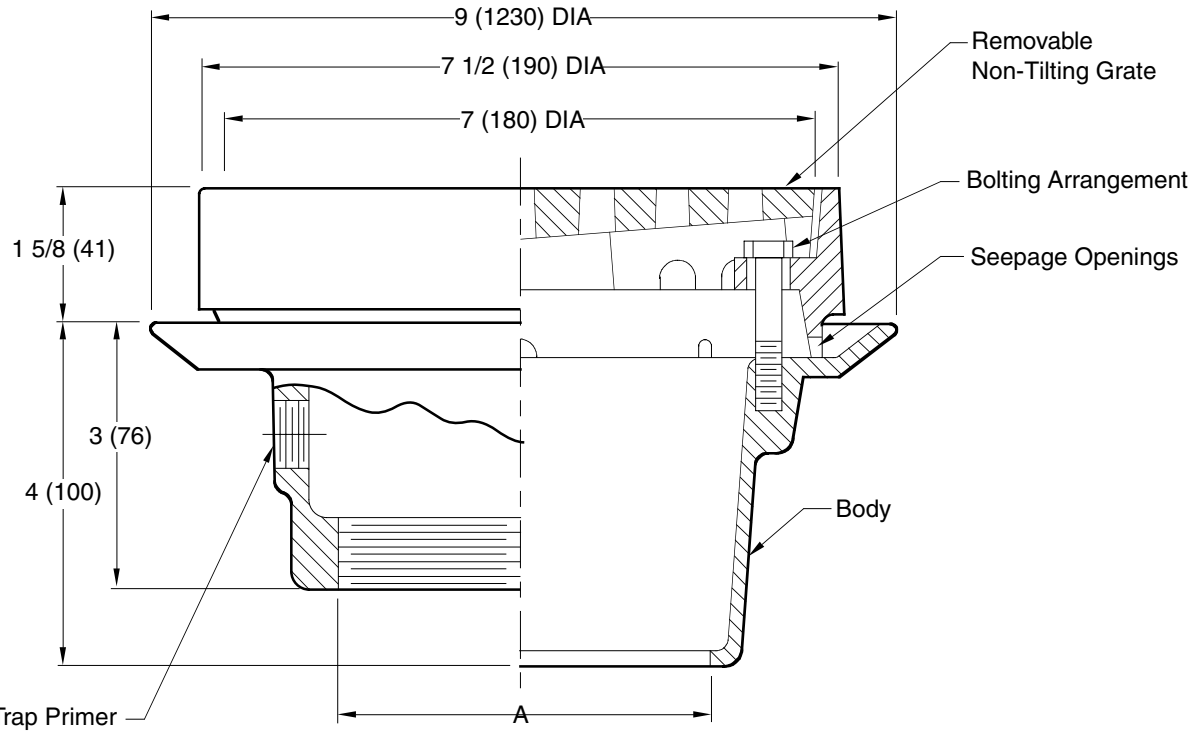
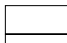



# FLOOR DRAIN

**FUNCTION:** This drain can be used for numerous general purpose applications in all types of buildings. A number of different variations can be accomplished as indicated under "When Specified".

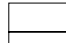
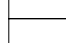
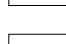
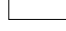


A(Pipe Size) = 02(50), 03(80), or 04(100)

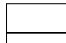

 Fig. 2108C ... CAULK OUTLET  
 Fig. 2108Y ... NO-HUB OUTLET

**REGULARLY FURNISHED:**  
 Duco Cast Iron Body, Collar and Non-Tilting Slotted Grate.

**VARIATIONS:**

-  Flat Bottom Strainer -FBS
-  Backwater Valve -V
-  Trap Primer Connection -P050 1/2(13), -P075 3/4(19)
-  T Threaded Outlet

**OPTIONAL MATERIALS:**

-  All Galvanized -G
-  All Bronze -BB

**NOTE:** Dimensions shown in parentheses are in millimeters.

DRAWING NUMBER S2108  
 SIZE A  
 SCALE: NONE  
 DATE: 12-16-88  
 APPROVED BY: TDavis  
 CHECKED BY: CR  
 DRAWN BY: WAS  
 FIGURE NUMBER 2108  
 DIMENSIONS ARE SUBJECT TO MANUFACTURERS TOLERANCE AND CHANGE WITHOUT NOTICE  
 WE CAN ASSUME NO RESPONSIBILITY FOR USE OF SUPERSEDED OR VOID DATA

A	10-23-97	Submittal Update	EMB	BS	WEIGHT POUNDS	VOLUME CUBIC FEET	<b>FIGURE NUMBER</b> <b>2108</b>
REV.	DATE	DESCRIPTION	BY	CKD. BY			