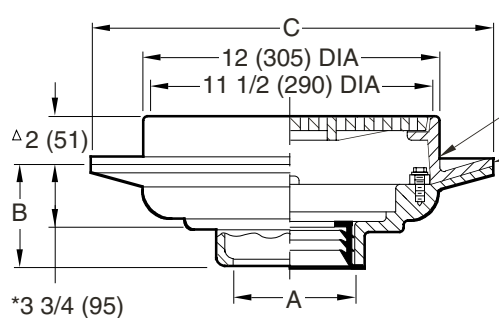


FLOOR DRAINS

WITH 12" (305) ROUND TOPS

MEDIUM DUTY DRAINS

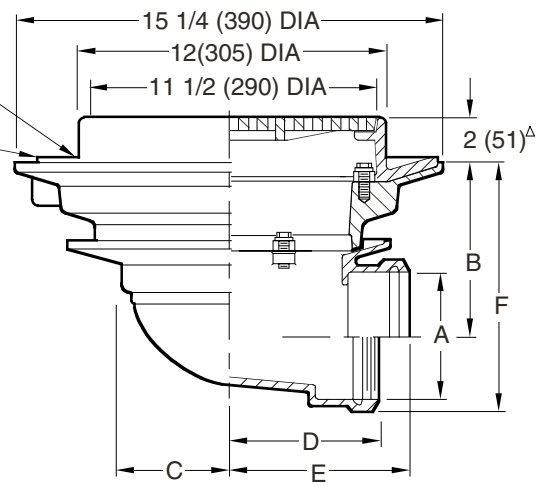
FUNCTION: Used in moderate traffic areas where waste water contains no sediment or debris and floor construction requires a shallow drain. Body flange and flashing collar serve as anchor in on grade locations and as flashing clamp when installed in waterproof floors.



Free Area
 28.5 SQ IN
 (184) SQ CM

Seepage Openings

Collar Can Be Used As Flashing Clamp (When Required)



A (Pipe Size) = 02(50), 03(75), 04(100), 05(125) or 06(150)

- Fig. 2130C ... SHALLOW BODY CAULK OUTLET
- Fig. 2131C ... DEEP BODY CAULK OUTLET
- Fig. 2131Y ... DEEP BODY NO-HUB OUTLET

- Fig. 2135C ... CAULK OUTLET
- Fig. 2135T ... THREADED OUTLET

Figure	B			C DIA
	Caulk	Thread	NO-HUB	
2130	3 3/4 (95)	3 3/4 (95)	5 (125)	**15 1/4 (390)
2131	5 (125)	3 3/4 (95)	5 (125)	15 1/4 (390)

A SIZE	02 (50)	03 (75)	04 (100)	05 (125)	06 (150)
B	6 7/8 (175)	6 3/8 (162)	5 7/8 (149)	5 (125)	4 1/2 (115)
C	4 3/4 (120)	4 3/4 (120)	4 3/4 (120)	6 1/4 (160)	6 1/4 (160)
D	6 (150)	6 (150)	6 (150)	6 5/8 (168)	6 7/8 (175)
E	7 1/4 (185)	7 1/2 (190)	7 3/4 (195)	7 3/4 (195)	7 3/4 (195)
F	8 5/8 (219)	8 3/4 (220)	8 3/4 (220)	8 1/2 (215)	8 1/2 (215)

** Dimension is 16 (405) for Caulk outlet.

REGULARLY FURNISHED:
 Duco Cast Iron Body and Flashing Collar with Cast Iron Bar Grate.

VARIATIONS:

- Deflector Grate -DG
- Dome Grate -D
- Flat Bottom Strainer -FBS
- Hinged Grate -H
- L Speedi-Set Service Weight 2(50), 3(75) & 4" (100) sizes only (Fig. 2131 only)
- LXH Speedi-Set Extra Heavy 2(50), 3(75) & 4"(100) sizes only (Fig. 2131 only)
- NO-HUB Adaptor (Specify Fig. 2646Y) (Fig. 2130 & 2135 only)
- Sediment Bucket -B
- Solid Scoriated Cover -SC
- Square Top -S
- Trap Primer Connection -P050 1/2" (13) & -P075 3/4" (19) (Fig. 2131,2131Y & 2135 only)
- Vandal Proof Grate -U
- Wide Flange Deck Drain (Specify Fig. DX2566)
- T Threaded Outlet

OPTIONAL MATERIALS:

- Ductile Iron Grate -M
- Galvanized Cast Iron -G
- Nickel Bronze Top -NB
- Polished Bronze Top -PB

*This Dimension to Internal Stop of Speedi-Set Gasket.
 Δadd 3/8" (10) when hinged top is specified.
 Δadd 1/8" (3) when bronze top is specified.
 ■ Meets U. S. Gov't Spec. WW-P-541-b. Type 220 04" (100) size only.

NOTE: 02(50), 03(75), & 04"(100) sizes require a transition collar (as shown in above illustration) which fits between the body & collar. 05(125) & 06"(150) sizes do not require transition collar.

NOTE: Dimensions shown in parentheses are in millimeters.

DRAWING NUMBER S2130
 SIZE A
 SCALE: NONE
 DATE: 5-17-85
 APPROVED BY: TD
 CHECKED BY: TD
 DRAWN BY: BS
2130,2131,2135

WE CAN ASSUME NO RESPONSIBILITY FOR USE OF SUPERSEDED OR VOID DATA
 DIMENSIONS ARE SUBJECT TO MANUFACTURERS TOLERANCE AND CHANGE WITHOUT NOTICE

REV.	DATE	DESCRIPTION	BY	CKD. BY	WEIGHT POUNDS	VOLUME CUBIC FEET	FIGURE NUMBER
							2130,2131,2135