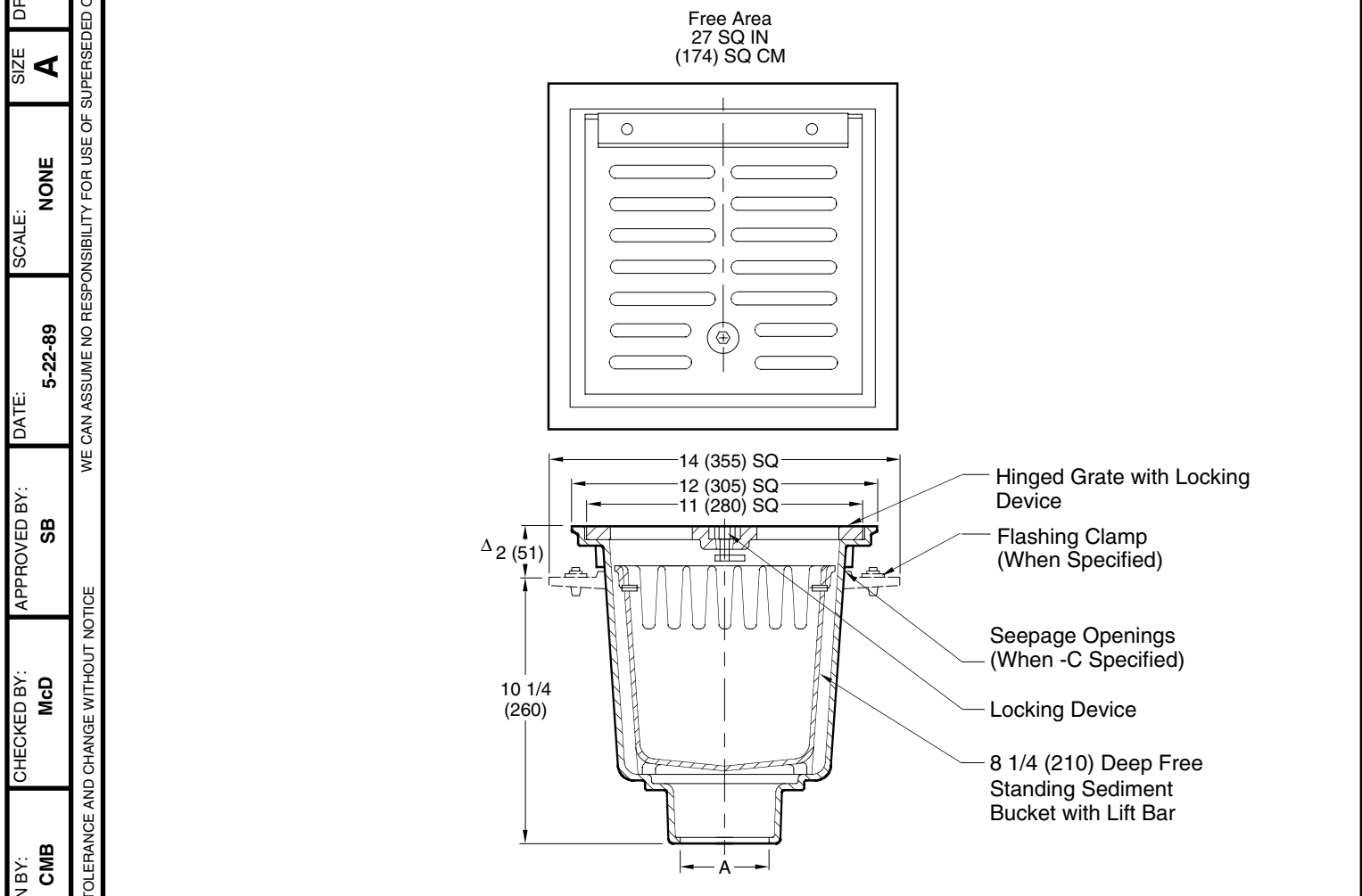


TRAFFIC FLOOR DRAINS

SQUARE TOP DRAINS WITH FREE STANDING SEDIMENT BUCKET

FUNCTION: Used in boiler rooms, industrial plants, and other applicable areas where waste water contains debris or salvageable materials which must be intercepted. Large hinged grate permits easy access for bucket removal.



A (Pipe Size) = 03(75), 04(100), 05(125) or 06(150)

Δ add 3/16" (5) when bronze top is specified.

	Fig. 2410C . . . LESS FLANGE . . . CAULK OUTLET
	Fig. 2410Y . . . LESS FLANGE . . . NO-HUB OUTLET
	Fig. 2415C . . . WITH FLANGE . . . CAULK OUTLET
	Fig. 2415Y . . . WITH FLANGE . . . NO-HUB OUTLET

NOTE: Dimensions shown in parentheses are in millimeters.

REGULARLY FURNISHED:
Ducto Cast Iron Body with Hinged Grate, Locking Device and Sediment Bucket.

- VARIATIONS:**
- Flashing Clamp -C (Fig. 2415 only)
 - Loose Set Grate -LSG
 - Vandal Proof Grate -U
 - L Speedi-Set Service Weight
02(50), 03(75) & 04"(100) Sizes only
 - LXH Speedi-Set Extra Heavy
02(50), 03(75) & 04"(100) Sizes only

- OPTIONAL MATERIALS:**
- Ductile Iron Grate -M
 - Galvanized Cast Iron -G
 - Nickel Bronze Top -NB
 - Polished Bronze Top -PB

2410, 2415	DRAWN BY: CMB	CHECKED BY: McD	APPROVED BY: SB	DATE: 5-22-89	SCALE: NONE	SIZE A	DRAWING NUMBER S2410
REV.	DATE	DESCRIPTION	BY	CKD. BY	WEIGHT POUNDS	VOLUME CUBIC FEET	FIGURE NUMBER
							2410, 2415