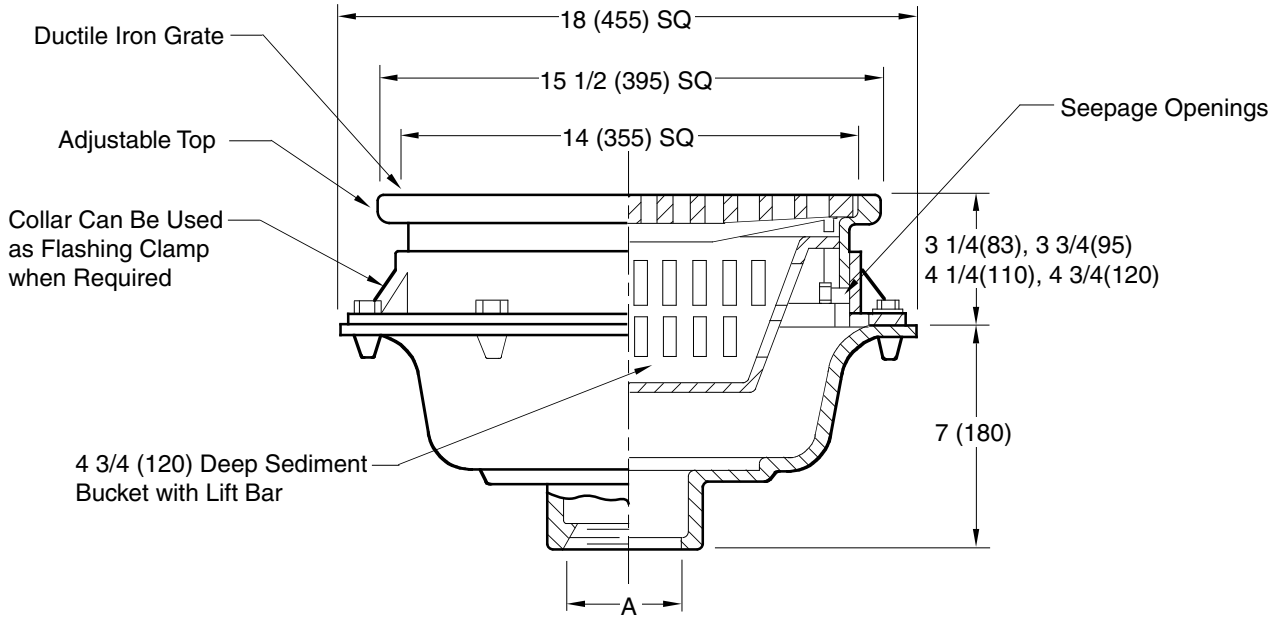


TRAFFIC FLOOR DRAINS

HEAVY DUTY PACKING HOUSE DRAIN

FUNCTION: Used in packing houses and industrial plants where large quantities of water must be drained and heavy traffic is anticipated. Adjustable top conveniently adapts to different floor thicknesses. Top has four step adjustments in 1/2"(13) increments. Large suspended sediment bucket is essential in packing house applications where considerable debris is anticipated.

Free Area
63 SQ IN
(406) SQ CM



A (Pipe Size) = 03(75), 04(100), 05(125) or 06(150)

- Fig. 2488C ... CAULK OUTLET
- Fig. 2488T ... THREADED OUTLET

REGULARLY FURNISHED:
 Duco Cast Iron Body, Flashing Collar and Adjustable Top with Ductile Iron Grate and Cast Iron Sediment Bucket.

- VARIATIONS:**
- Adjustable Extensions 5"(125) to 6 1/2(165) -E
 - Flat Bottom Strainer -FBS
 - Less Bucket (Specify Fig. 2487)
 - Vandal Proof Grate -U

- OPTIONAL MATERIALS:**
- Aluminum Bucket -AB
 - Galvanized Cast Iron -G

NOTE: Dimensions shown in parentheses are in millimeters.

DRAWING NUMBER S2488
 SIZE A
 SCALE: NONE
 DATE: 5-17-85
 APPROVED BY: TD
 CHECKED BY: TD
 DRAWN BY: PJ
 FIGURE NUMBER 2488

WE CAN ASSUME NO RESPONSIBILITY FOR USE OF SUPERSEDED OR VOID DATA

REV.	DATE	DESCRIPTION	BY	CKD. BY	WEIGHT POUNDS	VOLUME CUBIC FEET	FIGURE NUMBER 2488