

SMITH® JAY R. SMITH MFG. CO.®
 DIVISION OF SMITH INDUSTRIES, INC.
 POST OFFICE BOX 3237
 MONTGOMERY, ALABAMA 36109-0237 (USA)
 TEL: 334-277-8520 FAX: 334-272-7396 www.jrsmith.com

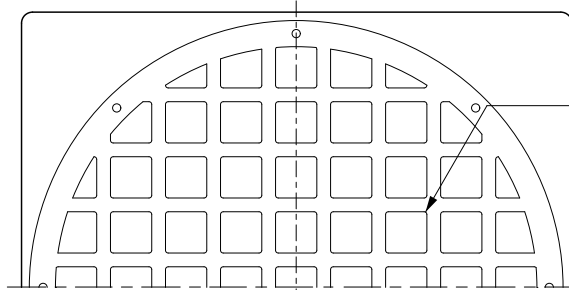


LOCATION

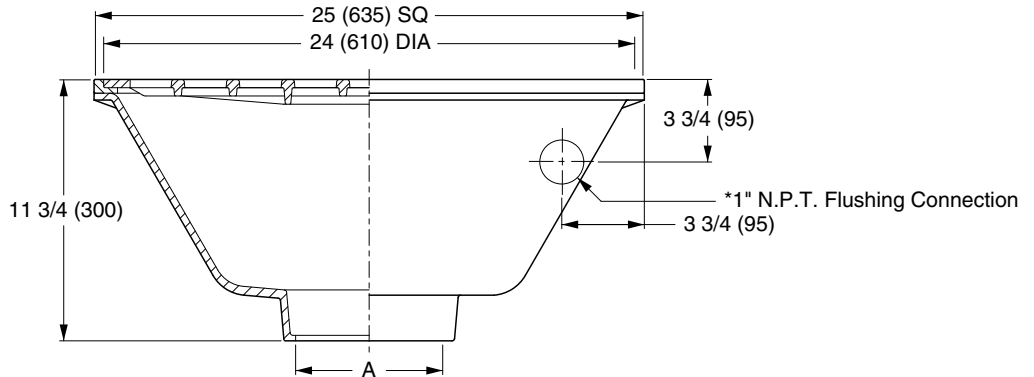
FLOOR DRAINS

FUNCTION: Used in biology laboratories and animal dens. Large grate openings permit animal wastes and other solids to be washed into drain. The acid resistant coated interior and flushing feature serve to maintain a sanitary condition.

Free Area
 205 SQ IN
 (1323) SQ CM



2(51) X 2(51)
 Grate Openings



A (Pipe Size) = 04(100) or 06(150)

Fig. 2508C.....CAULK OUTLET

*NOTE: The potable water supply to which a flushing type drain is connected must be protected by a suitable vacuum breaker.

REGULARLY FURNISHED:
 Duco Cast Iron Body with Acid Resistant Coated Interior, Nickel Bronze Top with Secured Grate.

VARIATIONS:

Vandal Proof Grate -U

OPTIONAL MATERIALS:

- Duco Cast Iron Body -CI
- Galvanized Cast Iron -G
- Polished Bronze Strainer -PB

NOTE: Dimensions shown in parentheses are in millimeters.

B
 DRAWING NUMBER S2508
 SIZE A
 SCALE: NONE
 DATE: 5-17-85
 APPROVED BY: TD
 CHECKED BY: TD
 DRAWN BY: PJ
 2508
 DIMENSIONS ARE SUBJECT TO MANUFACTURERS TOLERANCE AND CHANGE WITHOUT NOTICE
 FIGURE NUMBER

REV.	DATE	DESCRIPTION	BY	CKD.	WEIGHT POUNDS	VOLUME CUBIC FEET	FIGURE NUMBER
B A	2-17-99 11-09-93	Submittal redraw Submittal Update	CMD EMB	BS BS			2508