

K



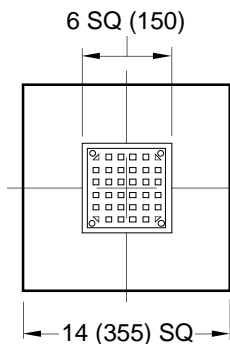
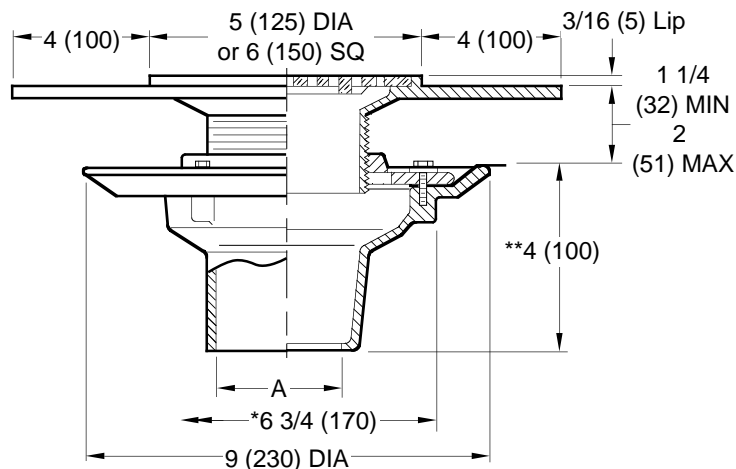
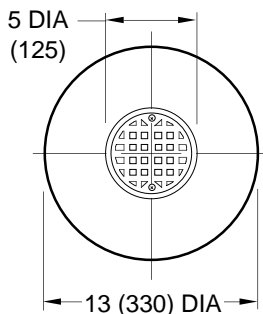
**JAY R. SMITH MFG. CO.**  
 DIVISION OF SMITH INDUSTRIES, INC.  
 POST OFFICE BOX 3237  
 MONTGOMERY, ALABAMA 36109-0237 (USA)  
 TEL: 334-277-8520 FAX: 334-272-7396



LOCATION

# FLOOR OR SHOWER DRAINS WITH ADJUSTABLE STRAINER HEADS

**FUNCTION:** Used in any floor or shower area. Four inch wide flange allows ample surface adhesion of traffic bearing deck covering.



A (Pipe Size) = 02 (50), 03 (80) or 04 (100)

Fig. DX 2005Y ..... (A) ROUND TOP ..... NO-HUB ..... SQUARE TOP (B) ..... FIG. DX 2005Y  
 Fig. DX 2010C ..... (A) ROUND TOP ..... CAULK ..... SQUARE TOP (B) ..... FIG. DX 2010C

**NOTE:** Seepage openings should be sealed with mastic when secondary waterproofing membrane is not used.

\* Min 6 3/4 (170) hole required for core drilled application.  
 \*\* 3 (76) when threaded outlet is specified.

**NOTE:** Dimensions shown in parentheses are in millimeters.

**REGULARLY FURNISHED:**

Duco Cast Iron Body, Adjustable Strainer as Indicated by Suffix Letter Selected with 4" (100) Wide Flange and Secondary Flashing Flange.

**VARIATIONS:**

- L Speedi-Set Service Weight (Fig. DX2005 only)
- LXH Speedi-Set Extra Heavy (Fig. DX2005 only)
- Securing Holes -SH
- Sediment Bucket -B
- Vandal Proof Screws -U
- T Threaded Outlet

**OPTIONAL MATERIALS:**

- Galvanized Cast Iron Body -G
- Nickel Bronze Strainer -NB
- Polished Bronze Strainer -PB

SEE PM0457 FOR OPTIONAL STRAINER HEADS.

DRAWING NUMBER  
SDX2005

SIZE  
A

SCALE:  
NONE

DATE:  
5-17-85

APPROVED BY:  
TD

CHECKED BY:  
TD

DRAWN BY:  
PJ

DX2005, DX2010

WE CAN ASSUME NO RESPONSIBILITY FOR USE OF SUPERSEDED OR VOID DATA

DIMENSIONS ARE SUBJECT TO MANUFACTURERS TOLERANCE AND CHANGE WITHOUT NOTICE

FIGURE NUMBER	K	1-22-96	Revised Dwg.	EMB		WEIGHT POUNDS	VOLUME CUBIC FEET	FIGURE NUMBER
	J	7-20-95	Revised	EMB	BS			DX2005, DX2010
	H	3-21-95	Added Metric	EMB	BS			
	G	11-12-93	Chg'd Reg Furn, Var, Opt Mat	EMB	BS			
REV.	DATE	DESCRIPTION			BY	CKD. BY		