



**SMITH® JAY R. SMITH MFG. CO.®**  
 DIVISION OF SMITH INDUSTRIES, INC.  
 POST OFFICE BOX 3237  
 MONTGOMERY, ALABAMA 36109-0237 (USA)  
 TEL: 334-277-8520 FAX: 334-272-7396 www.jrsmith.com



MEMBER OF:

LOCATION

# STAINLESS STEEL GREASE RECOVERY DEVICE (GRD) with LOW PROFILE GREASE+GARD®

**FUNCTION:** Used in all areas where fats, oils and grease must be intercepted and collected. The unique fully automatic grease removal design permits removal of accumulated grease without having to remove the cover. Accumulated grease in liquid form is automatically skimmed off and discharged into a reservoir for convenient disposal.

**NOTES:**

1. Allow 11(280) for Fig. 8175 and 12 1/2(320) for Fig. 8176 above interceptor cover for Grease+Gard® removal if necessary.
2. A solids interceptor MUST be installed prior to the grease recovery device (GRD) for proper operation and optimal efficiency of the GRD.
3. Dimensions shown in parentheses are in millimeters.

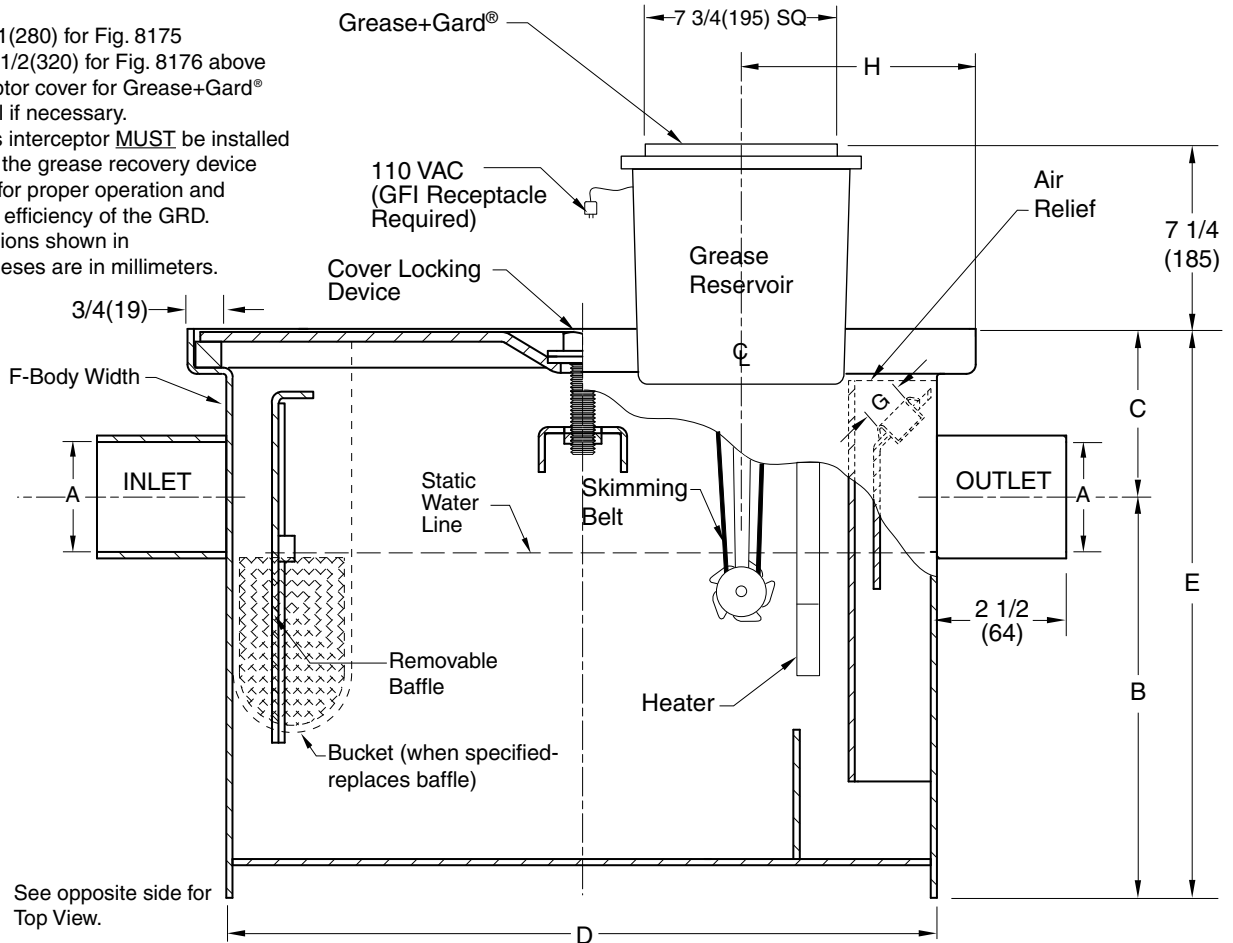


FIG. NO.	GPM FLOW RATE (L/M)	GREASE CAP LBS (KG)	A	B	C	D	E	F (WIDTH)	G (Plug Size)	H
8175-20	20(75)	40(15)	03(75)	12 3/4(325)	4 (100)	19 1/2(495)	16 3/4(425)	19 1/2(495)	1 1/2(38)	5 1/2(140)
8175-25	25(95)	50(19)	03(75)	14 1/4(360)	4 1/8(105)	21 1/8(538)	18 3/8(468)	21 1/8(538)	1 1/2(38)	5 1/2(140)
8175-35	35(132)	70(26)	03(75)	14 1/2(370)	4 1/2(115)	22 1/2(570)	19(485)	22 1/2(570)	1 1/2(38)	5 1/2(140)
8175-50	50(189)	100(37)	03(75)	14 1/2(370)	5 1/4(135)	31 3/4(805)	19 3/4(500)	22 1/2(570)	1 1/2(38)	5 1/2(140)
LOW TYPE INTERCEPTOR										
8176-20	20(75)	40(15)	03(75)	7(180)	3 1/2 (89)	39 1/2(1005)	10 1/2(265)	21 7/16(543)	1 1/2(38)	20 1/2(520)
8176-35	35(132)	70(26)	03(75)	7(180)	4 3/4 (120)	52 1/4(1325)	11 3/4(300)	27 5/16(698)	1 1/2(38)	26 7/8(683)
8176-50	50(189)	100(37)	03(75)	10(255)	6 (150)	50 1/4(1275)	16(405)	27 5/16(698)	1 1/2(38)	25 7/8(658)

**REGULARLY FURNISHED:**

Automatic Grease Recovery Device (GRD) with Low Profile Grease+Gard® Skimmer with Heater and Grease Reservoir, Type 304 Stainless Steel Interceptor with No-Hub Connections and Flow Control Fitting.

**VARIATIONS:**

- T Threaded Inlet/Outlet
- Extension -E (12 (305) maximum height available)
- Bucket -B (Allow 15 (380) above interceptor for removal)

**OPTIONAL MATERIALS:**

- Duco Coated Steel -A505

E	09/04/07	Rev. Drawing, Notes, Variations	JJ	CL	WEIGHT POUNDS	VOLUME CUBIC FEET	FIGURE NUMBER <b>8175-8176</b> <b>SERIES</b>
D	4-9-07	Added @ to Grease+Gard	RN	CL			
C	3-27-07	Rev. Drawing, NOTE	TBW	CL			
B	3-8-07	Revised NOTE	RN	CL			
REV.	DATE	DESCRIPTION	BY	CKD. BY			

DRAWING NUMBER  
**S8175-8176**

SIZE  
**A**

SCALE:  
**NONE**

DATE:  
**5-31-06**

APPROVED BY:  
**CL**

CHECKED BY:  
**CL**

DRAWN BY:  
**TBW**

**8175-8176**

FIGURE NUMBER

WE CAN ASSUME NO RESPONSIBILITY FOR USE OF SUPERSEDED OR VOID DATA

DIMENSIONS ARE SUBJECT TO MANUFACTURERS TOLERANCE AND CHANGE WITHOUT NOTICE

## STAINLESS STEEL GREASE RECOVERY DEVICE (GRD) with LOW PROFILE GREASE+GARD®

DRAWING NUMBER: **S8175-8176BS**  
 SIZE: **A**  
 SCALE: **NONE**  
 DATE: **3-7-06**  
 APPROVED BY: **CL**  
 CHECKED BY: **CL**  
 DRAWN BY: **TBW**  
**8175-8176**  
 FIGURE NUMBER

WE CAN ASSUME NO RESPONSIBILITY FOR USE OF SUPERSEDED OR VOID DATA  
 DIMENSIONS ARE SUBJECT TO MANUFACTURERS TOLERANCE AND CHANGE WITHOUT NOTICE

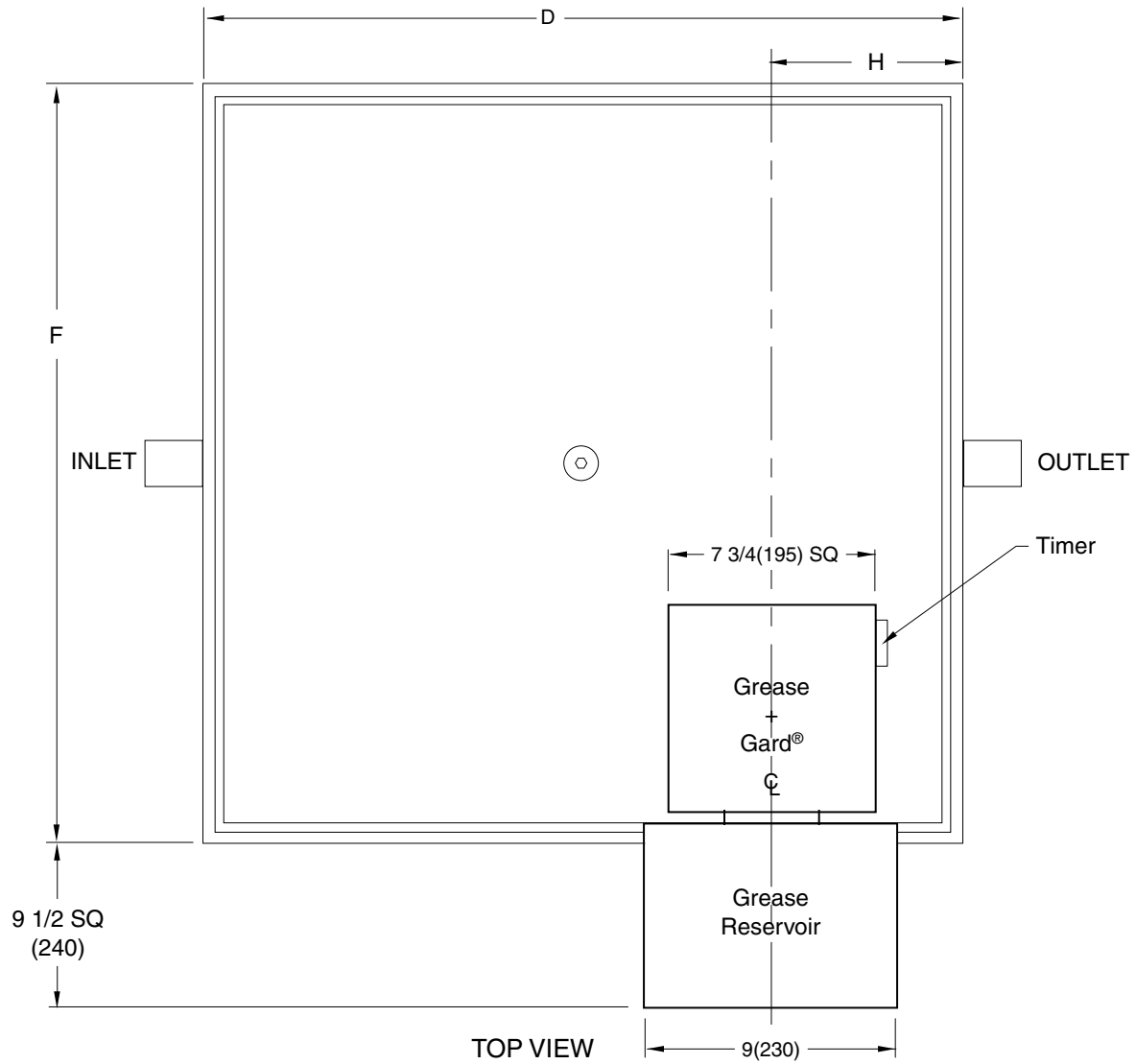


FIG. NO.	GPM FLOW RATE (L/M)	GREASE CAP LBS (KG)	D	F	H
8175-20	20(75)	40(15)	21(535)	21(535)	5 1/2(140)
8175-25	25(95)	50(19)	22 5/8(575)	22 5/8(575)	5 1/2(140)
8175-35	35(132)	70(26)	24 (610)	24 (610)	5 1/2(140)
8175-50	50(189)	100(37)	33 1/4(845)	24(610)	5 1/2(140)
<b>LOW TYPE INTERCEPTOR</b>					
8176-20	20(75)	40(15)	41(1040)	23(585)	20 1/2(520)
8176-35	35(132)	70(26)	53 3/4(1365)	28 3/4(730)	26 7/8(683)
8176-50	50(189)	100(37)	51 3/4(1315)	28 3/4(730)	25 7/8(658)

**NOTE:** Dimensions shown in parentheses are in millimeters.

REV.	DATE	DESCRIPTION	BY	CKD. BY	WEIGHT POUNDS	VOLUME CUBIC FEET	<b>FIGURE NUMBER</b> <b>8175-8176</b> <b>SERIES</b>
B	4-9-07	Added @ to Grease+Gard	RN	CL			
A	3-8-07	Revised Dimensions	RN	CL			