

K

SMITH® JAY R. SMITH MFG. CO.®
 DIVISION OF SMITH INDUSTRIES, INC.
 POST OFFICE BOX 3237
 MONTGOMERY, ALABAMA 36109-0237 (USA)
 TEL: 334-277-8520 FAX: 334-272-7396 www.jrsmith.com



MEMBER OF:

LOCATION

DRAWING NUMBER
8817

SIZE
A

SCALE:
NONE

DATE:
1-10-92

APPROVED BY:
SJM

CHECKED BY:
JCS

DRAWN BY:
TBW

WE CAN ASSUME NO RESPONSIBILITY FOR USE OF SUPERSEDED OR VOID DATA

DIMENSIONS ARE SUBJECT TO MANUFACTURERS TOLERANCE AND CHANGE WITHOUT NOTICE

SAND AND SEDIMENT INTERCEPTOR

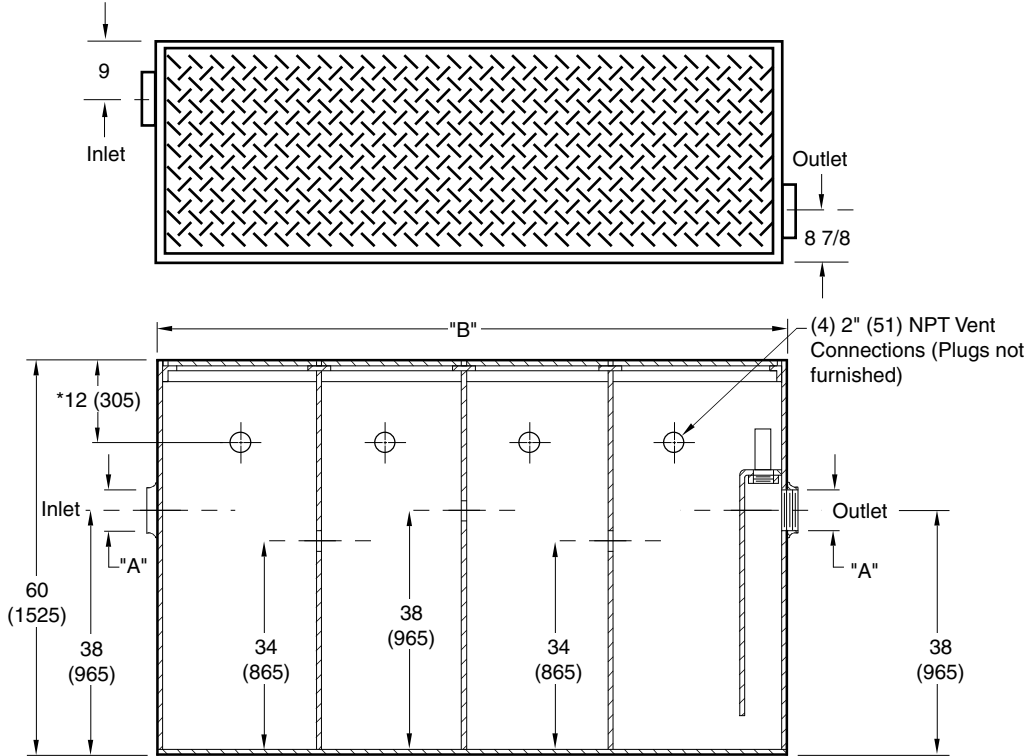


FIG. NO.	SIZE (Gallons)	CUBIC FEET	"A" PIPE SIZE	WIDTH	LENGTH "B"
8817-300	300	43	04" (100) NPT	36 (915)	60 (1525)
8817-400	400	54	04" (100) NPT	36 (915)	72 (1830)
8817-500	500	72	04" (100) NPT	36 (915)	96 (2438)
8817-600	600	81	04" (100) NPT	36 (915)	108 (2743)
8817-700	700	90	04" (100) NPT	36 (915)	120 (3048)
8817-800	800	108	04" (100) NPT	36 (915)	144 (3458)
8817-1000	1000	135	04" (100) NPT	36 (915)	180 (4572)

*12" (305) Regularly Furnished for vent connections - Specify dimension if lower or higher is required.

REGULARLY FURNISHED:

Acid Resistant Coated Fabricated Steel Body and Non-Skid Cover.

NOTE: It is the responsibility of the installer to check all parts (internal and external) to verify they are in their proper operating order and location.

VARIATIONS:

- Anchor Flange -F
- Extra Heavy Duty Reinforced Cover -XHD
- Flange and Flashing Clamp -F-C
- Extension -E (Specify height eg: -E24 for 24" (610) Ext.) (Ext Height shall be measured from top of body.)

OPTIONAL MATERIALS:

- All Stainless Steel -SS

NOTE: Dimensions shown in parentheses are in millimeters.

8817

FIGURE NUMBER

K	04/07/09	Revised Text	JJ	CL	WEIGHT POUNDS	VOLUME CUBIC FEET	FIGURE NUMBER 8817
J	04/01/09	Revised Text	JJ	CL			
H	2-3-05	Revised Variations	RN	CL			
G	12-22-00	Submittal Update	RN	CL			
REV.	DATE	DESCRIPTION	BY	CKD. BY			