



JAY R. SMITH MFG. CO.
 DIVISION OF SMITH INDUSTRIES, INC.
 POST OFFICE BOX 3237
 MONTGOMERY, ALABAMA 36109-0237 (USA)
 TEL: 334-277-8520 FAX: 334-272-7396 www.jrsmith.com

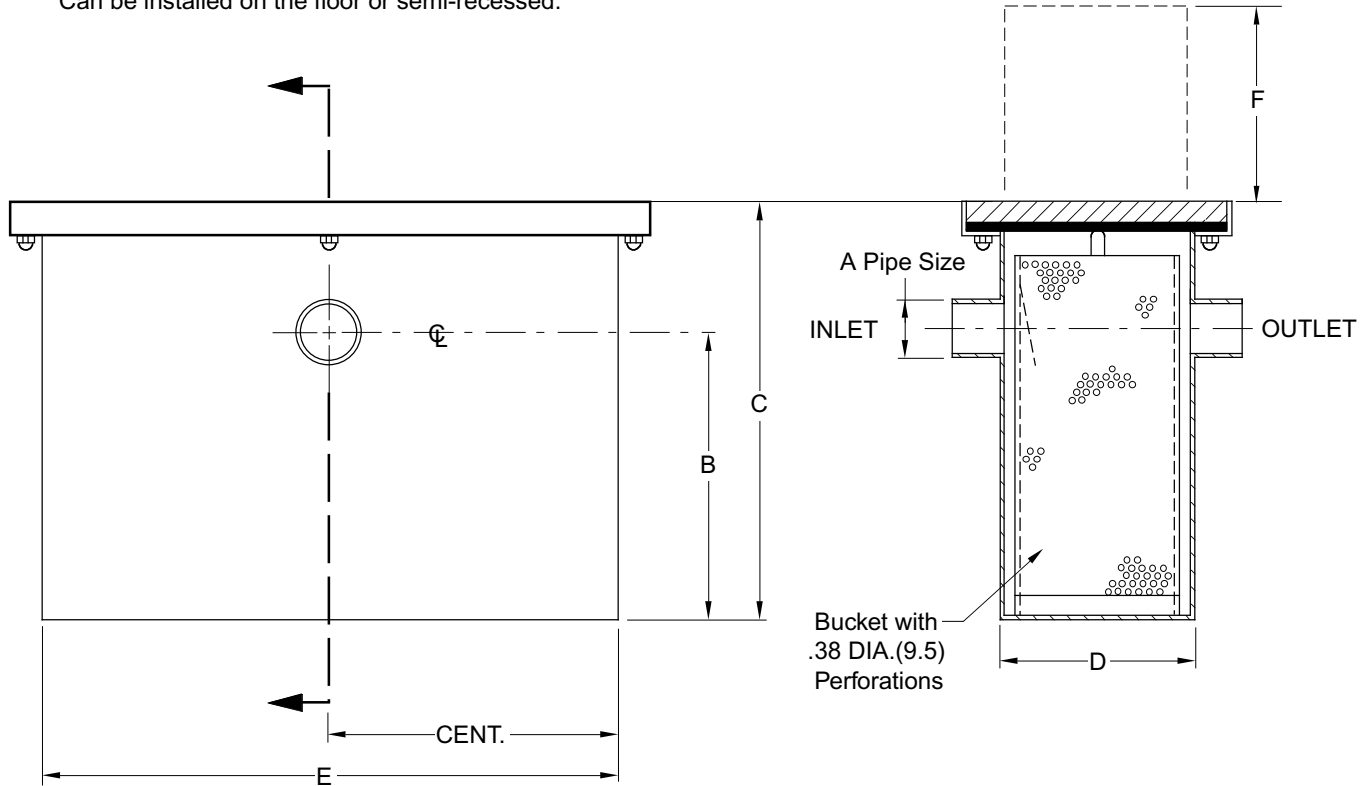


MEMBER OF:

LOCATION

SOLIDS INTERCEPTOR

FUNCTION: To provide means of collecting various food waste solids to prevent entry into the grease interceptor. Can be installed on the floor or semi-recessed.



NO-HUB INLET AND OUTLET

FIGURE NO.	GPM	A (Pipe Size)	B	C	D	E	F
8870	4	02 (50)	7 3/4 (195)	11 (280)	10 (255)	9 (230)	14 (356)
8871	7	02 (50)	8 1/2 (215)	12 (305)	12 (305)	10 (255)	14 (356)
8872	10	02 (50)	9 1/2 (240)	13 1/4 (335)	12 (305)	11 1/2 (290)	16 (406)
8873	15	02 (50)	12 (305)	15 1/2 (395)	10 (255)	13 1/2 (345)	18 (457)
8874	20	03 (75)	13 (335)	17 (430)	10 (255)	15 3/4 (400)	23 (584)
8875	25	03 (75)	15 1/4 (390)	19 3/4 (500)	10 (255)	16 3/4 (425)	23 (584)
8876	35	03 (75)	16 (405)	21 (535)	10 (255)	18 1/4 (465)	24 (610)
8877	50	03 (75)	17 1/2 (445)	24 1/4 (615)	10 (255)	20 3/4 (525)	28 (711)
8878	75	04 (100)	21 1/2 (545)	37 (940)	10 (255)	30 1/2 (775)	30 (762)

REGULARLY FURNISHED:

All Steel Fabricated Interceptor Body with
 Stainless Steel Perforated Bucket and
 Gasketed Recessed Cover.

NOTE: Allow "F" above Interceptor for
 removal of strainer.

NOTE: Dimensions shown in parentheses are
 in millimeters.

DRAWING NUMBER
8870-34

SIZE
A

SCALE:
NONE

DATE:
11-1-96

APPROVED BY:
WAS

CHECKED BY:
WAS

DRAWN BY:
EMB

8870-34

FIGURE NUMBER

REV.	DATE	DESCRIPTION	BY	CKD. BY
B	6-11-98	Revised Submittal	ASL	DG
A	8-1-97	Flipped Dimensions B&D	CMD	WAS

WEIGHT
 POUNDS

VOLUME
 CUBIC FEET

FIGURE NUMBER
8870-34

WE CAN ASSUME NO RESPONSIBILITY FOR USE OF SUPERSEDED OR VOID DATA

DIMENSIONS ARE SUBJECT TO MANUFACTURERS TOLERANCE AND CHANGE WITHOUT NOTICE