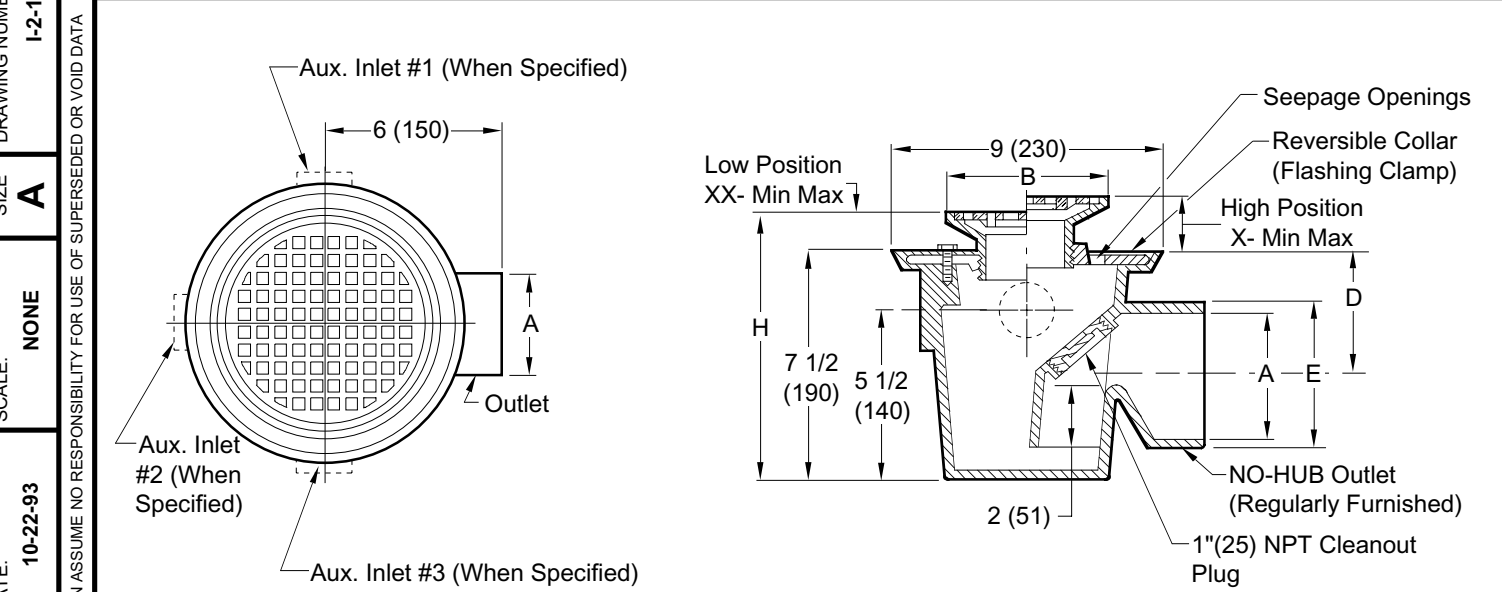


FLOOR DRAIN WITH INTEGRAL TRAP



AVAILABLE STRAINERS

Strainer Size	*Collar In High Position		*Collar In Low Position		Free Area Sq. In. (Sq. Cm.)		H MIN
	X		XX		Round	Square	
B	Min.	Max.	Min.	Max.			
05 (125)	1 1/4 (32)	2 1/4 (57)	3/4 (19)	1 5/8 (41)	7 (45.16)	6.5 (41.94)	8 1/4 (210)
06 (150)	1 1/4 (32)	2 1/4 (57)	3/4 (19)	1 5/8 (41)	9 (58.07)	12.5 (80.65)	
07 (180)	1 1/4 (32)	2 1/4 (57)	7/8 (22)	1 7/8 (48)	14 (90.33)	11 (70.97)	8 3/8 (213)
08 (205)	1 1/2 (38)	2 1/2 (63)	1 (25)	1 7/8 (48)	17 (109.68)	14 (90.33)	
Δ 09 (230)	1 1/2 (38)	2 3/8 (60)	1 (25)	1 7/8 (48)	18 (116.14)	16 (103.23)	8 1/2 (215)
Δ 10 (255)	1 1/2 (38)	2 3/8 (60)	1 (25)	1 7/8 (48)	23 (148.40)	16 (103.23)	

A PIPE SIZE	D	E
02 (50)	3 3/16 (80)	2 5/16 (58.67)
03 (80)	3 11/16 (93)	3 3/8 (85.95)
04 (100)	4 3/16 (106)	4 3/8 (111)

Δ Add 3/8"(10) To All Min./Max. Dimensions For Round Strainer.
 *Collar is reversible to obtain extreme high and low strainer positions.

REGULARLY FURNISHED
 Duco Cast Iron Body with Integral Trap and 1"(25) NPT Plug and Flashing Collar and Satin Nickel Bronze Adjustable Strainer Head as Indicated by Suffix Letter Selected.

- VARIATIONS:**
- One to Three Side Auxiliary Inlets 1/2"(13) thru 2"(51) Tap, NPT or B.S. (Specify size, qty. and location)
 - Vandal Resistant -U

- OPTIONAL MATERIALS:**
- Chrome Plated Strainer -CP (Not recommended for traffic floor)
 - Galvanized Body -G
 - High Polished Nickel Bronze -NB
 - Satin Polished Bronze Strainer -PB

NOTE: Dimensions Shown in Parenthesis are in Millimeters.

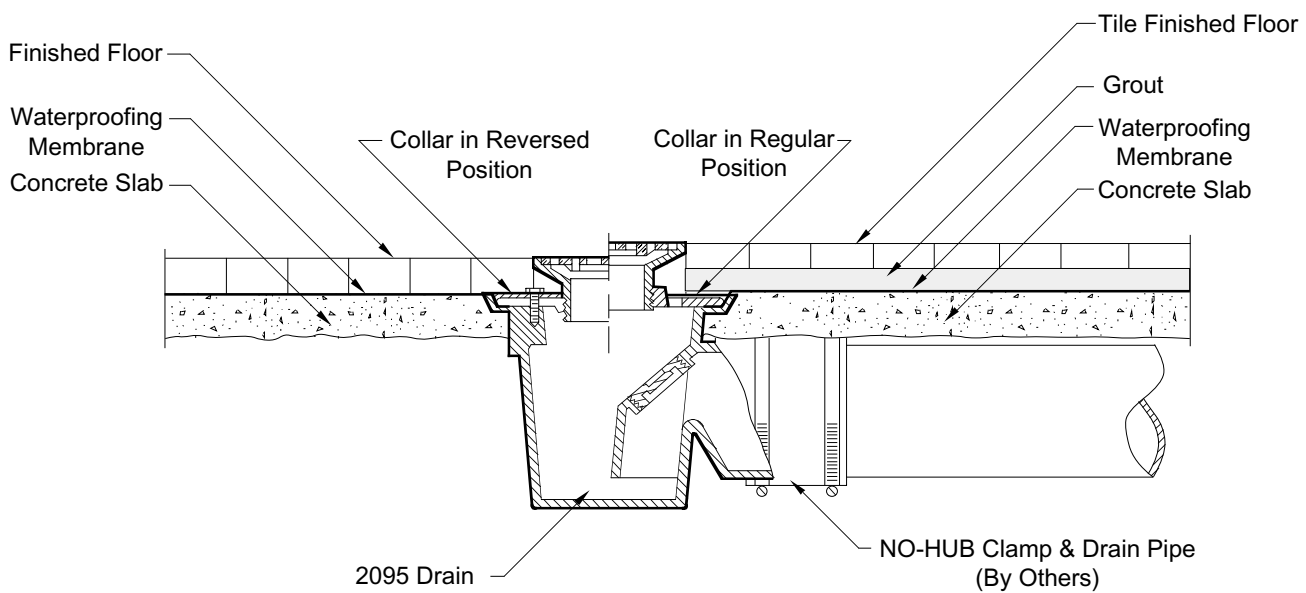
C
 DRAWING NUMBER I-2-154
 SIZE A
 SCALE: NONE
 DATE: 10-22-93
 APPROVED BY: GWC
 CHECKED BY: GWC
 DRAWN BY: TWK
 2095
 FIGURE NUMBER

REV.	DATE	DESCRIPTION	BY	CKD. BY
C	10-31-97	Submittal Update	EMB	BS
B	12-28-95	Added Dim	EMB	SB
A	1-16-95	Revised	EMB	JCS

WEIGHT POUNDS	VOLUME CUBIC FEET	FIGURE NUMBER
		2095

SEE BACK SHEET

FLOOR DRAIN WITH INTEGRAL TRAP INSTALLATION DRAWING



WE CAN ASSUME NO RESPONSIBILITY FOR USE OF SUPERSEDED OR VOID DATA

DRAWING NUMBER: I-2-154-BS
 SIZE: A
 SCALE: NONE
 DATE: 10-26-93
 APPROVED BY:
 CHECKED BY: TWK
 DRAWN BY: TWK
 FIGURE NUMBER: 2095

A	1-16-95	Chg'd Dwg	EMB	JCS			FIGURE NUMBER
REV.	DATE	DESCRIPTION	BY	CKD. BY	WEIGHT POUNDS	VOLUME CUBIC FEET	2095