

LABOR SAVER LAVATORY SUPPORTS WITH ENAMELED EXPOSED ARMS FOR HIGH BACK LAVATORIES WITH EXTENDED LUGS

DRAWING NUMBER **S0761**
 SIZE **A**
 SCALE: **NONE**
 DATE: **04/09/01**
 APPROVED BY: **AM**
 CHECKED BY: **CR**
 DRAWN BY: **JJ**

WE CAN ASSUME NO RESPONSIBILITY FOR USE OF SUPERSEDED OR VOID DATA
 DIMENSIONS ARE SUBJECT TO MANUFACTURERS TOLERANCE AND CHANGE WITHOUT NOTICE

FLOOR MOUNTED UPRIGHTS

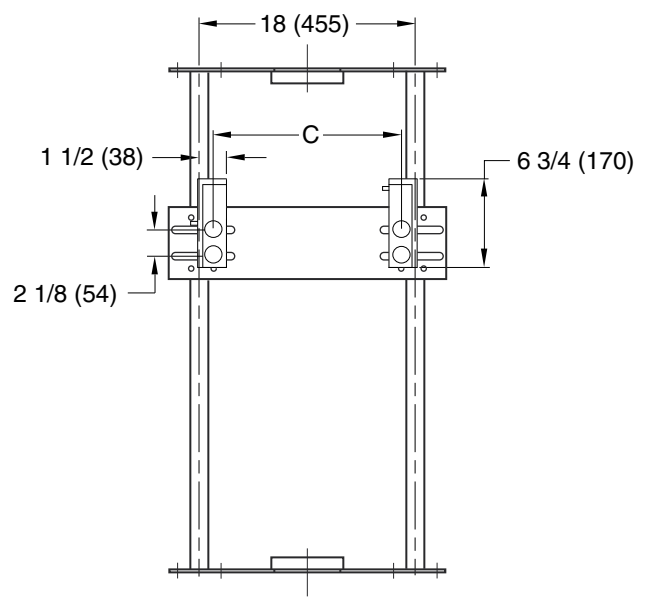
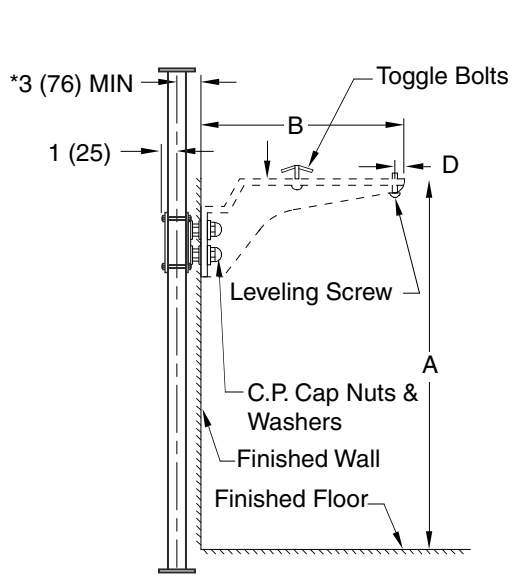
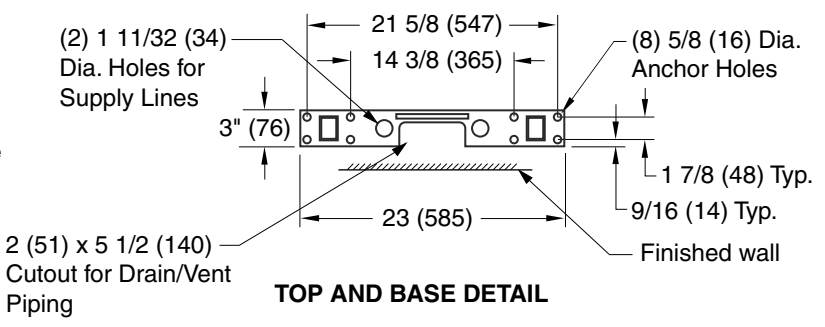


Fig. 0761... WITH ACID RESISTANT COATED EXPOSED ARMS FOR FLAT SLAB AND HIGH BACK LAVATORIES

NOTE: The rough-in dimensions listed on this drawing are based on current information available to Jay R. Smith by the fixture manufacturers. We recommend that you verify these dimensions with the fixture manufacturer. We will not accept responsibility for rough-in dimension changes by the fixture manufacturer.

NOTE: *This dimension includes a wall thickness of 1/2". For greater wall thickness, specify centerline of upright to finished wall dimension.

NOTE: Dimensions shown in parenthesis are in millimeters.



ROUGH-IN TABLE

FIXTURE MFG.	NAME	NUMBER	SIZE	A	B	C	D

0761
 FIGURE NUMBER

B	12/19/01	Changed Hole Size in Base Inside wall (washer/nut/washer)	JJ	AM	WEIGHT POUNDS	VOLUME CUBIC FEET	FIGURE NUMBER 0761
A	11/06/01		JJ	AM			
REV.	DATE	DESCRIPTION	BY	CKD. BY			