

HYDRANTS



FIG. 5509QT QUARTERHORSE-1/4 TURN SS BOX-TYPE HYDRANT W/INTEGRAL VACUUM BREAKER AND CONCEALED HOSE CONNECTION

FUNCTION: Provides positive non-freeze protection where water is required at the outside of the building and features an integral vacuum breaker. The stainless steel recessed box conceals the nozzle and operating mechanism. The locking cover prevents unauthorized use.

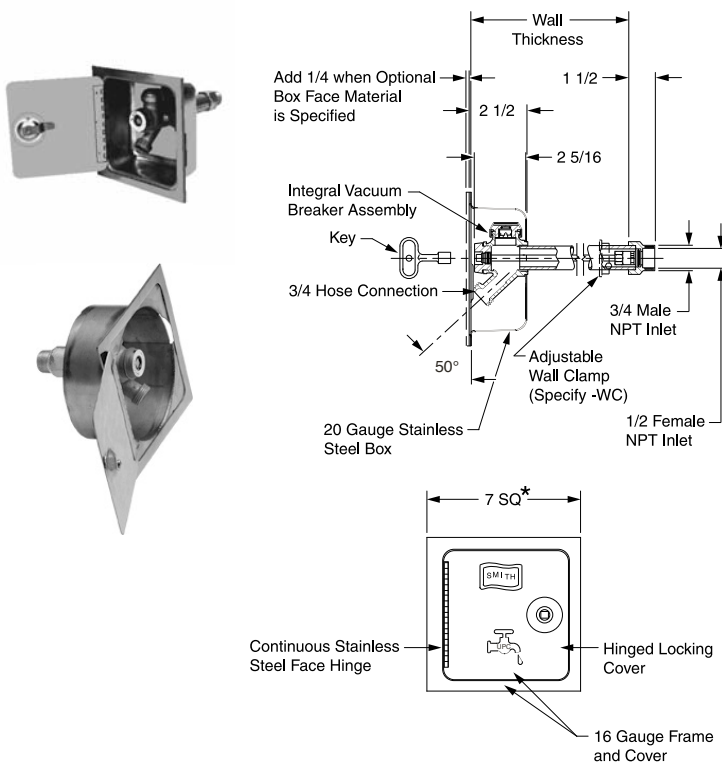


Fig. 5509QT

WALL THICKNESS	3/4" INLET	APPROX WEIGHT LBS
-SAP	834.00	8
06, 08"	968.00	9
10, 12, 14, 16"	1,056.00	10
18, 20, 22, 24"	1,146.00	11

REGULARLY FURNISHED: Bronze Nickel Plated Quarter Turn Non-Freeze Hydrant with Hose Connection, Integral Vacuum Breaker, "T" Handle Key, and Stainless Steel Box with Full 180° Cover Opening.

OPTIONS:

	ADD
-CL Cylinder Lock	117.00
-CP Chrome Plated Face	190.00
-E Elbow Inlet	29.00
-E1 1" NPT Elbow Inlet	162.00
-HC1 1" Hose Conn Adaptor	133.00
-IC1** 1" Male NPT Inlet Connection	133.00
-MF1 1" Straight Female Inlet	133.00
-NB Nickel Bronze Face	173.00
-PB Polished Bronze Face	38.00
-RB Rough Bronze Face	38.00
-SE Sweat Elbow Inlet	29.00
-SE1 1" NPT Sweat Elbow Inlet	162.00
-SS Straight Sweat Inlet	N/C
-SS1 1" Straight Sweat Inlet	133.00
-SSR 6" Cored Hole Stainless Steel Box	172.00
-W "Water" on Cover	N/C
-WC Adjustable Wall Clamp	N/C

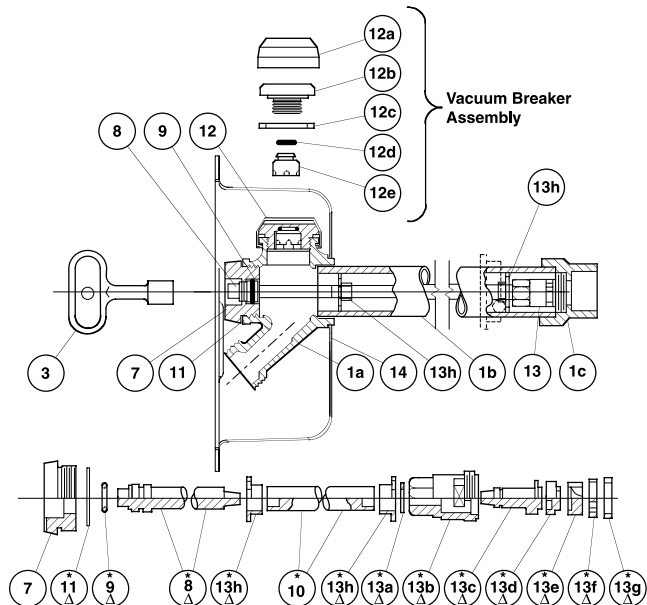
For Hydrant Parts Repair Kit, See Pg. 340

NOTES:

- *Recommended wall opening 6" x 6". Hydrant shall be in the vertical position only, the connection must be on the bottom.
- When ordering, specify wall thickness in 2" increments as follows: 06, 08, 10, 12, 14, 16, 18, 20, 22 or 24. When wall clamp -WC is desired, increase wall thickness dimension by 2".
- All Jay R. Smith hydrants are manufactured with "NO-LEAD" brazing rings, and USDA approved lubricants.
- When an Optional Box Face Material is Specified a Concealed Hinge will be Provided, also add 1/4" to Flange Thickness.

** Add 3/4" to overall length when specified

Seepage of a small amount of water may occur from the vacuum breaker upon the initial opening and closing of this hydrant. This is normal operation.



HYDRANT PARTS LIST					
NO.	DESCRIPTION	NO.	DESCRIPTION	NO.	DESCRIPTION
1	Head/Casing Assembly	10	Operator Rod	13a	Retaining Ring
1a	Head	11	Face Nut Washer	13b	Valve Body
1b	Casing	12	Vacuum Breaker Assembly	13c	Valve Actuator
1c	Valve Housing	12a	VB Cap	13d	Nylon Thrust Washer
3	Key	12b	VB Body	13e	Rotating Ceramic Disc
7	Face Nut	12c	VB Washer	13f	Fixed Ceramic Disc
8	Actuator Shaft	12d	VB "O" Ring	13g	Silicon Rubber Seal
9	Actuator "O" Ring	12e	VB Piston	13h	Retainer Guide (2)
		13	Valve Body Assembly	14	Box Assembly S.S.

Δ These Replacement Parts Available in HPRK-7

* All Parts Accessible from Face of Hydrant by Removing Face Nut.

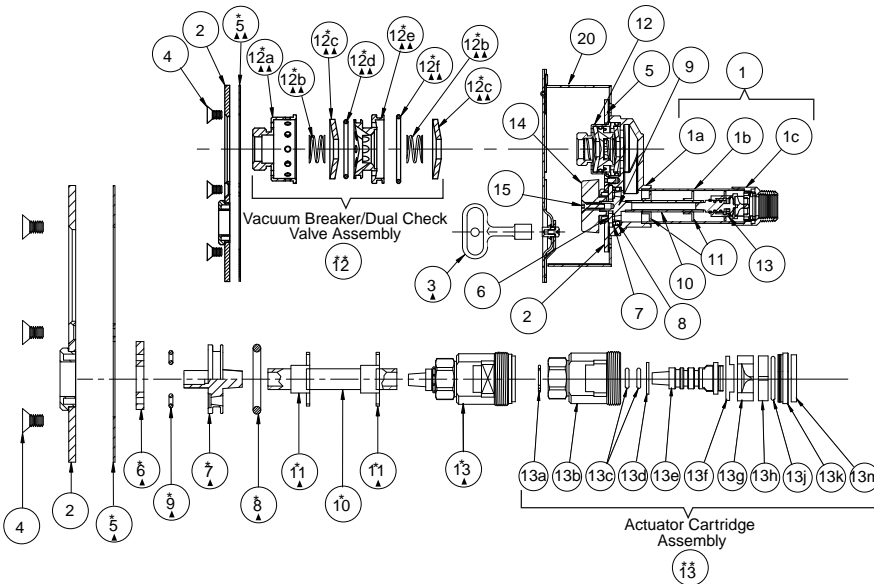
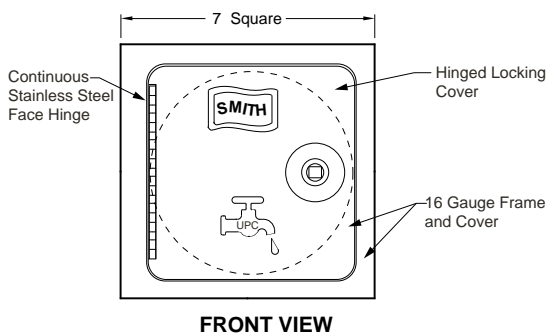
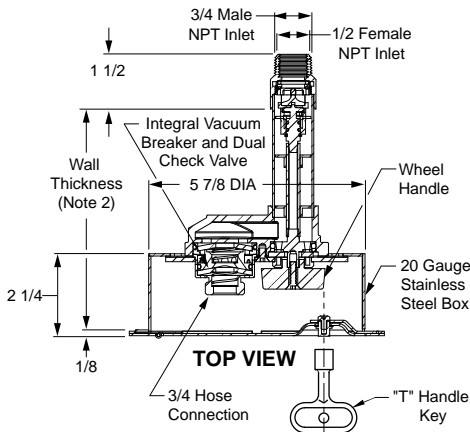
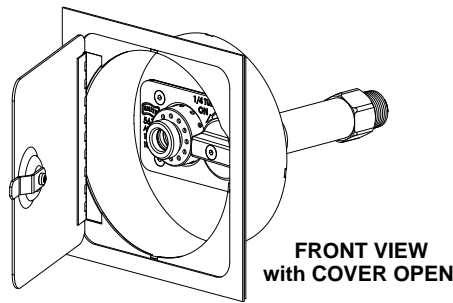
HYDRANTS

HYDRANTS



FIG. 5517 GUARDIAN DUAL CHECK-1/4 TURN NON-FREEZE WALL HYDRANT W/AUTOMATIC DRAINING INTEGRAL VACUUM BREAKER, DUAL CHECK VALVE AND SS BOX FOR 6" DIA. CORED HOLE IN CONCRETE EXTERIOR WALL

FUNCTION: Provides positive non-freeze protection where water is required at the outside of the building and features an integral vacuum breaker and dual check valve. The stainless steel recessed box conceals the nozzle and operating mechanism. The locking cover prevents unauthorized use.



OPTIONS:

-CL	Cylinder Lock	ADD
-HC1	1" Hose Conn Adaptor	117.00
-IC1	1" Inlet Connection	133.00
-W	"Water" on Cover	133.00
-WC	Adjustable Wall Clamp	N/C
		N/C

- NOTES:**
1. Recommended wall opening 6" DIA.
 2. When ordering, specify wall thickness in 1" increments as follows 5,6,7,8,9.....24.
 3. All Jay R. Smith hydrants are manufactured with "NO-LEAD" brazing rings, and USDA approved lubricants.
 4. When wall clamp -WC is desired, increase wall thickness dimension by 2".
 5. Add 3/4" to Overall Length when IC1 is specified
 6. When specifying Fig. 5517 (-SAP) the wall thickness shall be 5.

For Hydrant Parts Repair Kit, See Pg. 340

Meets ANSI A112.21.3M Specifications
Complies w/ ASSE 1019-B,1052 and 1053.
IAPMO Listed- File #2749
Patent No. US 6,752,167

Seepage of a small amount of water may occur from the vacuum breaker upon the initial opening and closing of this hydrant. This is normal operation.

WALL THICKNESS	3/4" INLET
-SAP	1,131.00
05 - 08"	1,282.00
09 - 16"	1,372.00
17 - 24"	1,461.00
25 - 31"	1,551.00

REGULARLY FURNISHED: Bronze Quarter Turn Non-Freeze Automatic Draining Hydrant with Stainless Steel Face, Hose Connection, Integral Vacuum Breaker and Dual Check Valve, "T" Handle Key, Wheel Handle and Stainless Steel Box with Full 180° Cover Opening.

HYDRANT PARTS LIST			
NO.	DESCRIPTION	NO.	DESCRIPTION
1	Casing Assembly	12e	**Flow Diverter
1a	Head	12f	**Large O-Ring
1b	Casing	13	Actuator Cartridge Assembly
1c	Valve Housing	13a	**Retaining Ring
2	Wall Plate Assembly	13b	**Valve Body
3	Key	13c	**Actuator O-Ring (2)
4	Wall Plate Securing Screw	13d	**Nylon Thrust Spacer
5	Wall Plate Gasket (5)	13e	**Valve Actuator
6	Stationary Operator Piece	13f	**Nylon Thrust Washer
7	Moveable Operator Piece	13g	**Rotating Ceramic Disc
8	Moveable Operator O-Ring	13h	**Fixed Ceramic Disc
9	Drain Hole Seal (2)	13j	**O-Ring
10	Operator Rod	13k	**O-Ring Gasket Retainer
11	Operator Rod Guides (2)	13m	**Rubber Seal
12	Vacuum Breaker/Dual Check Valve Assembly	14	Wheel Handle
12a	**Vacuum Breaker Housing	15	Wheel Handle Screw
12b	**Spring (2)	20	Box Assembly
12c	**Cone Washer (2)		
12d	**Small O-Ring		

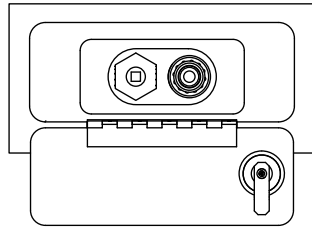
▲ These Replacement Parts Available in HPRK-19
▲▲ These Replacement Parts Available in HPRK-19VB
* These Parts Accessible from Face of Hydrant by Removing Wall Plate Assembly.
** Parts supplied as an assembly only, see part 12 or 13.

HYDRANTS

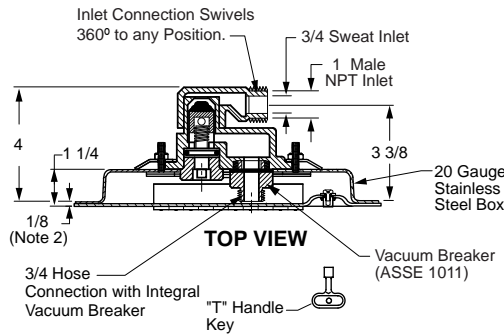


FIG. 5518 NARROW WALL WARM CLIMATE BOX TYPE HYDRANT WITH CONCEALED HOSE CONNECTION

FUNCTION: For installation in interior or exterior wall of building where a concealed hose connection is desired and there is no danger of freezing. Hydrant features an integral type vacuum breaker. The locking cover prevents unauthorized use.

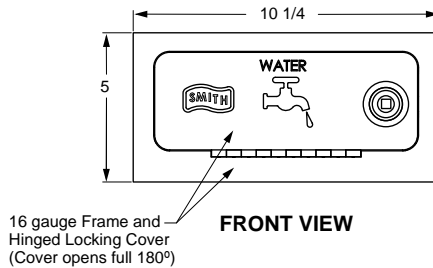


**FRONT VIEW
with COVER OPEN**



Seepage of a small amount of water may occur from the vacuum breaker upon the initial opening and closing of this hydrant. This is normal operation.

WALL THICKNESS	1" INLET
Narrow Wall	876.00



OPTIONS:

	ADD
-CL Cylinder Lock	117.00
-CP Chrome Plated Box Face.....	190.00
-NB Nickel Bronze Box Face	173.00
-PB Polished Bronze Box Face	38.00
-RB Rough Bronze Box Face	38.00

NOTES:

1. Recommended wall opening 3 3/16 x 8 1/2".
2. Add 3/8" when optional box face material is specified.
3. All Jay R. Smith hydrants are manufactured with "NO-LEAD" brazing rings, and USDA approved lubricants.

REGULARLY FURNISHED: All Bronze Warm Climate Hydrant with Hose Connection having Integral ASSE 1011 Vacuum Breaker, 360° Swivel Inlet Connection, "T" Handle Key and Stainless Steel Box.

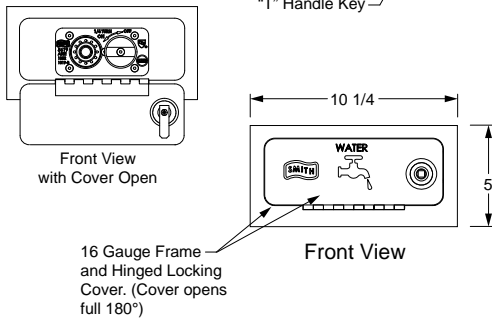
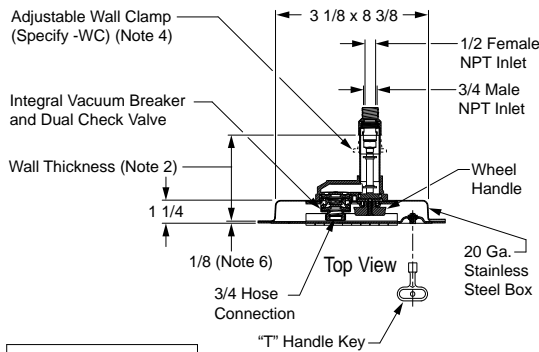
HYDRANTS

SMITH®



FIG. 5519 GUARDIAN DUAL CHECK-1/4 TURN NON-FREEZE WALL SS BOX-TYPE HYDRANT W/AUTOMATIC DRAINING INTEGRAL VACUUM BREAKER, DUAL CHECK VALVE AND CONCEALED HOSE CONN.

FUNCTION: Provides positive non-freeze protection where water is required at the outside of the building and features an integral vacuum breaker and dual check valve. The stainless steel recessed box conceals the nozzle and operating mechanism. The locking cover prevents unauthorized use.



WALL THICKNESS	3/4" INLET	APPROX WEIGHT LBS
-SAP	959.00	8
05 - 08"	1,110.00	9
09 - 16"	1,201.00	10
17 - 24"	1,289.00	11
25 - 31"	1,380.00	14

REGULARLY FURNISHED: Bronze Quarter Turn Non-Freeze Automatic Draining Hydrant with Stainless Steel Face, Hose Connection, Integral Vacuum Breaker and Dual Check Valve, "T" Handle Key, Wheel Handle and Stainless Steel Box with Full 180° Cover Opening.

OPTIONS:

OPTION	DESCRIPTION	ADD
-CL	Cylinder Lock	117.00
-CP	Chrome Plated Face	190.00
-E	Elbow Inlet	29.00
-E1	1" NPT Elbow Inlet	162.00
-HC1	1" Hose Conn Adaptor	133.00
-IC1	1" Male NPT Inlet Connection	133.00
-MF1	1" Straight Female Inlet	133.00
-NB	Nickel Bronze Face	173.00
-PB	Polished Bronze Face	38.00
-RB	Rough Bronze Face	38.00
-SE	Sweat Elbow Inlet	29.00
-SE1	1" NPT Sweat Elbow Inlet	162.00
-SS	Straight Sweat Inlet	N/C
-SS1	1" Straight Sweat Inlet	133.00
-WC	Adjustable Wall Clamp	N/C

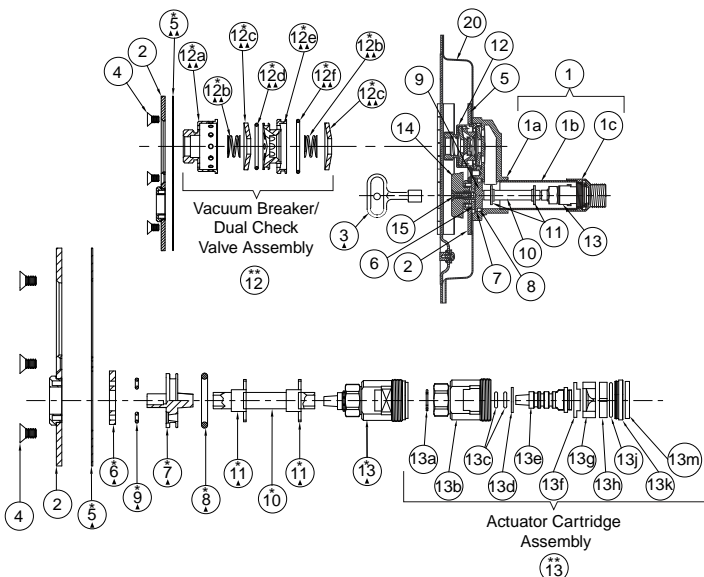
For Hydrant Parts Repair Kit, See Pg. 340

NOTES:

1. Recommended wall opening 3 3/16 x 8 1/2".
2. When ordering, specify wall thickness in 1" increments as follows 5,6,7,8,9.....24.
3. All Jay R. Smith hydrants are manufactured with "NO-LEAD" brazing rings, and USDA approved lubricants.
4. When wall clamp -WC is desired, increase wall thickness dimension by 2".
5. Add 3/4" to Overall Length when 1" NPT Male Inlet Connection is specified.
6. Add 3/8" When Optional Box Face Material is specified.
7. When specifying Fig. 5519 (-SAP) the wall thickness shall be 3".

Meets ANSI A112.21.3M Specifications
Complies w/ ASSE 1019-B,1052 and 1053.
IAPMO Listed- File #2749
Patent No. US 6,752,167

Seepage of a small amount of water may occur from the vacuum breaker upon the initial opening and closing of this hydrant. This is normal operation.



HYDRANT PARTS LIST					
NO.	DESCRIPTION	NO.	DESCRIPTION	NO.	DESCRIPTION
1	Casing Assembly	12	Vacuum Breaker/Dual Check Valve Assembly	13e	**Valve Actuator
1a	Head	12a	**Vacuum Breaker Housing	13f	**Nylon Thrust Washer
1b	Casing	12b	**Spring (2)	13g	**Rotating Ceramic Disc
1c	Valve Housing	12c	**Cone Washer (2)	13h	**Fixed Ceramic Disc
2	Wall Plate Assembly	12d	**Small O-Ring	13j	**O-Ring
3	Key	12e	**Flow Diverter	13k	**O-Ring Gasket Retainer
4	Wall Plate Securing Screw (5)	12f	**Large O-Ring	13m	**Rubber Seal
5	Wall Plate Gasket	13	Actuator Cartridge Assembly	14	Wheel Handle
6	Stationary Operator Piece	13a	**Retaining Ring	15	Wheel Handle Screw
7	Movable Operator Piece	13b	**Valve Body	20	Box Assembly
8	Movable Operator O-Ring	13c	**Actuator O-Ring (2)		
9	Drain Hole Seal (2)	13d	**Nylon Thrust Spacer		
10	Operator Rod				
11	Operator Rod Guides (2)				

▲ These Replacement Parts Available in HPRK-19

▲▲ These Replacement Parts Available in HPRK-19VB

* These Parts Accessible from Face of Hydrant by Removing Wall Plate Assembly.

* * Parts supplied as an assembly only, see part 12 or 13.

HYDRANTS



FIG. 5560QT SER. QUARTERHORSE-1/4 TURN "TWIN TEMP" CHROME PLATED BRONZE BOX-TYPE HYDRANT W/CONCEALED HOSE CONNECTION FOR HOT & COLD WATER

FUNCTION: Provides positive non-freeze protection where water is required at the outside of the building. Ideal for use in food handling areas, dairies and other places where both hot and cold water are desired. The recessed box conceals the hose connection and operating mechanisms. 1/4 turn of the key allows full flow to be obtained. The locking cover prevents unauthorized use.

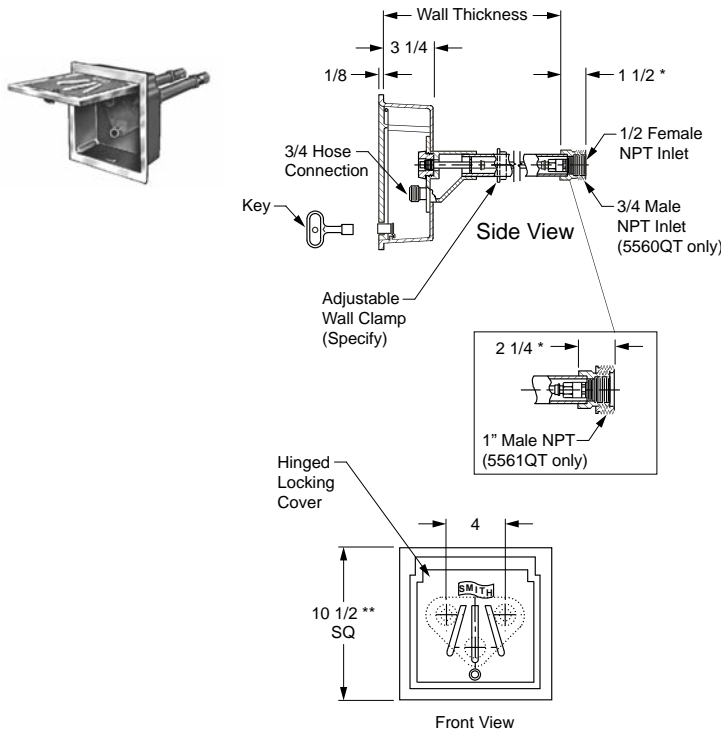
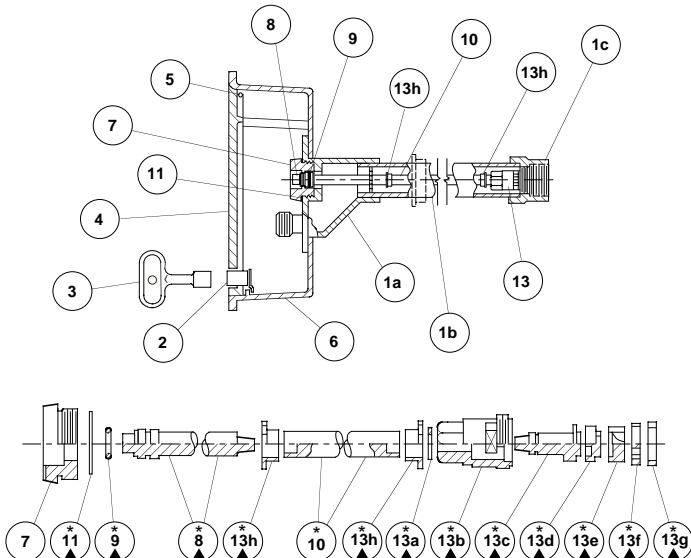


Fig. 5560QT

WALL THICKNESS	5560QT 3/4" INLET	5561QT 1" INLET	APPROX WEIGHT LBS
-SAP	2,206.00	2,466.00	12
08"	2,422.00	2,681.00	13
10, 12, 14"	2,564.00	2,825.00	14
16, 18"	2,708.00	2,968.00	15
20, 22, 24"	2,853.00	3,111.00	17

REGULARLY FURNISHED: Bronze Nickel Plated Quarter Turn Non-Freeze "Twin-Temp" Hydrant with Hose Connection, "T" Handle Key, and Bronze Box with Chrome Plated Face, and Inlet Size Furnished as Indicated by Figure Number Selected.



OPTIONS:

		ADD
-CL	Cylinder Lock	117.00
-E	Elbow Inlets	59.00
-E1	1" NPT Elbow Inlets	325.00
-H	3/4" Vacuum Breaker	86.00
-HC1	1" Hose Conn Adaptor	133.00
-MF1	1" Straight Female Inlets	266.00
-SE	Sweat Elbow Inlets	59.00
-SE1	1" NPT Sweat Elbow Inlets	325.00
-SS	Straight Sweat Inlets	N/C
-SS1	1" Straight Sweat Inlets	266.00
-WC	Adjustable Wall Clamps	N/C
-W	"Water" on Cover	N/C

DEDUCT

-LB	Less Box	571.00
-NB	NB Face, Deduct	29.00
-PB	PB Face, Deduct	43.00
-RB	RB Face, Deduct	43.00

For Hydrant Parts Repair Kit, See Pg. 340

*When specifying a 5561QT, add 3/4" to length of inlet connection as shown.

- NOTES:**
1. **Recommended Wall Opening 9 3/4" x 9 3/4".
 2. When ordering, specify wall thickness in 2" increments as follows: 6, 8, 10, 12, 14, 16, 18, 20, 22 or 24. When wall clamp -WC is desired, increase wall thickness dimension by 2".
 3. For 6" wall use 5560QT-SAP or 5561QT-SAP.
 4. All Jay R. Smith hydrants are manufactured with "NO-LEAD" brazing rings and USDA approved lubricants.

HYDRANT PARTS LIST			
NO.	DESCRIPTION	NO.	DESCRIPTION
1	Head/Casing Assembly	6	Box
1a	Head	7	Face Nut
1b	Casing	8	Actuator Shaft
1c	Valve Housing	9	Actuator "O" Ring
2	Locking Device	10	Operator Rod
3	Key	11	Face Nut Washer
4	Cover	13	Valve Body Assembly
5	Hinge Pins (2)	13a	Retaining Ring
		13b	Valve Body
		13c	Valve Actuator
		13d	Nylon Thrust Washer
		13e	Rotating Ceramic Disc
		13f	Fixed Ceramic Disc
		13g	Silicon Rubber Seal
		13h	Retainer Guide (2)

▲ These Replacement Parts Available in HPRK-7 (2) Repair Kits

* These Parts Accessible from Face of Hydrant by Removing Face Nut.

HYDRANTS

HYDRANTS



FIG. 5609QT QUARTERHORSE-1/4 TURN HYDRANT W/INTEGRAL VACUUM BREAKER AND EXPOSED HOSE CONNECTION

FUNCTION: For installation in interior or exterior building walls where an exposed hose connection is acceptable. Provides positive non-freeze protection and features an integral vacuum breaker. Adaptable to all types of wall construction.

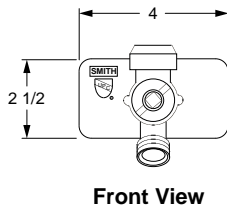
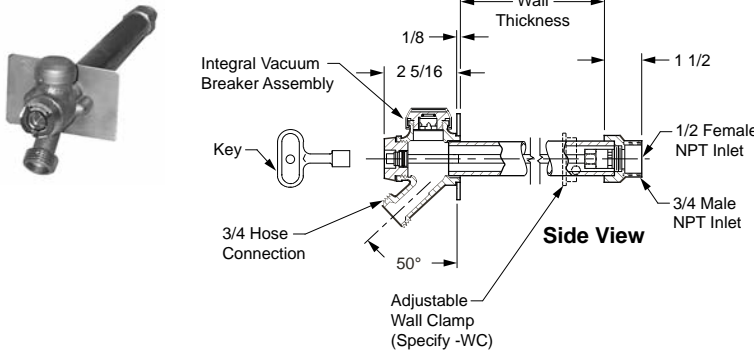


Fig. 5609QT

OPTIONS:

	ADD
-CP Chrome Plated Face	58.00
-E Elbow Inlet	29.00
-E1 1" NPT Elbow Inlet	162.00
-HC1 1" Hose Conn Adaptor	133.00
-IC1 1" Male NPT Inlet Connection*	133.00
-MF1 1" Straight Female Inlet	133.00
-PB Polished Bronze Face	38.00
-SS Straight Sweat Inlet	N/C
-SS1 1" Straight Sweat Inlet	133.00
-SE Sweat Elbow Inlet	29.00
-SE1 1" NPT Sweat Elbow Inlet	162.00
-WC Adjustable Wall Clamp	N/C
-WH Wheel Handle	182.00

*Add 3/4" to Overall Length When Specified

For Hydrant Parts Repair Kit, See Pg. 340

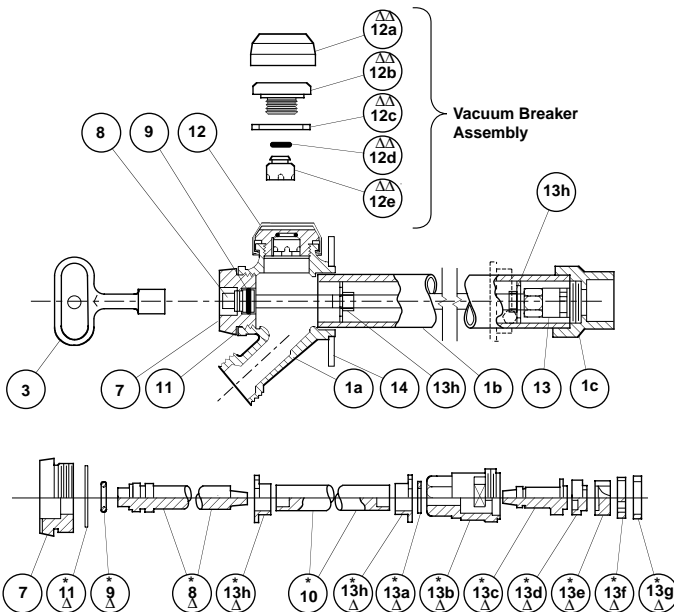
NOTES:

1. Recommended wall opening 2 x 2. Hydrant shall be in the vertical position only, the hose connection must be on the bottom.
2. When ordering, specify wall thickness in 02" increment as follows: 04, 06, 08, 10, 12, 14, 16, 18, 20, 22 or 24". When wall clamp -WC is desired, increase wall thickness dimension by 2".
3. All Jay R. Smith hydrants are manufactured with "NO-LEAD" brazing rings and USDA approved lubricants.

WALL THICKNESS	3/4" INLET	APPROX WEIGHT LBS
-SAP	408.00	7
04, 06"	541.00	8
08, 10, 12, 14"	630.00	9
16, 18, 20, 22"	718.00	10
24, 26, 28, 30"	810.00	12

Seepage of a small amount of water may occur from the vacuum breaker upon the initial opening and closing of this hydrant. This is normal operation.

REGULARLY FURNISHED: Bronze Nickel Plated Quarter Turn Non-Freeze Hydrant with 3/4" Hose Connection, Backer Plate, Integral Vacuum Breaker with Vandal Resistant Cap and "T" Handle Key.



HYDRANT PARTS LIST			
NO.	DESCRIPTION	NO.	DESCRIPTION
1	Head/Casing Assembly	10	Operator Rod
1a	Head	11	Face Nut Washer
1b	Casing	12	Vacuum Breaker Assembly
1c	Valve Housing	12a	VB Cap
3	Key	12b	VB Body
7	Face Nut	12c	VB Washer
8	Actuator Shaft	12d	VB "O" Ring
9	Actuator "O" Ring	12e	VB Piston
		13	Valve Body Assembly
		13a	Retaining Ring
		13b	Valve Body
		13c	Valve Actuator
		13d	Nylon Thrust Washer
		13e	Rotating Ceramic Disc
		13f	Fixed Ceramic Disc
		13g	Silicon Rubber Seal
		13h	Retainer Guide (2)
		14	Backer Plate w/Screws

Δ These Replacement Parts Available in HPRK-7

ΔΔ These Replacement Parts Available in HPRK-7VB

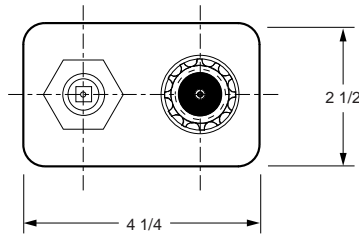
* These Parts Accessible from Face of Hydrant by Removing Face Nut.

HYDRANTS

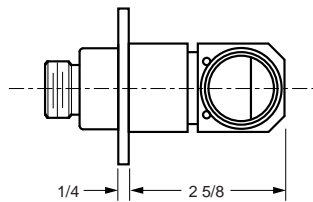


FIG. 5618 NARROW WALL WARM CLIMATE HYDRANT WITH INTEGRAL VACUUM BREAKER AND EXPOSED HOSE CONNECTION

FUNCTION: For installation in interior or exterior wall of building where a concealed hose connection is desired and there is no danger of freezing. Hydrant features an integral type vacuum breaker. The locking cover prevents unauthorized use.



FRONT VIEW

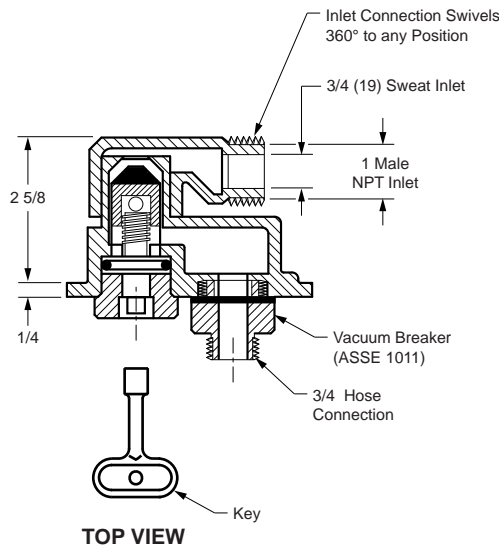


SIDE VIEW

NOTES:

1. Recommended wall opening 2 x 3 3/4".
2. All Jay R. Smith hydrants are manufactured with "NO-LEAD" brazing rings, and USDA approved lubricants.

Seepage of a small amount of water may occur from the vacuum breaker upon the initial opening and closing of this hydrant. This is normal operation.



TOP VIEW

WALL THICKNESS	1" INLET
Narrow Wall	417.00

REGULARLY FURNISHED: All Bronze Warm Climate Hydrant with Chrome Plated Face, Hose Connection and Integral ASSE 1011 Vacuum Breaker, 360° Swivel Inlet Connection and "T" Handle Key.

HYDRANTS

HYDRANTS



FIG. 5619 GUARDIAN DUAL CHECK-1/4 TURN HYDRANT W/INTEGRAL VACUUM BREAKER, DUAL CHECK VALVE AND EXPOSED HOSE CONNECTION

FUNCTION: For installation in interior or exterior building walls where an exposed hose connection is acceptable. Provides positive non-freeze protection. Adaptable to all types of wall construction.

OPTIONS:

OPTION	DESCRIPTION	ADD
-CP	Chrome Plated Face	58.00
-E	Elbow Inlet	29.00
-E1	1" NPT Elbow Inlet	162.00
-HC1	1" Hose Conn Adaptor	133.00
-IC1	1" Male NPT Inlet Connection*	133.00
-MF1	1" Straight Female Inlet	133.00
-PB	Polished Bronze Face	38.00
-SE	Sweat Elbow Inlet	29.00
-SE1	1" NPT Sweat Elbow Inlet	162.00
-SS	Straight Sweat Inlet	N/C
-SS1	1" Straight Sweat Inlet	133.00
-WC	Adjustable Wall Clamp	N/C
-WH	Wheel Handle	182.00

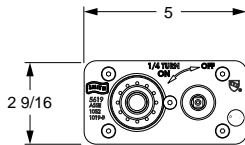
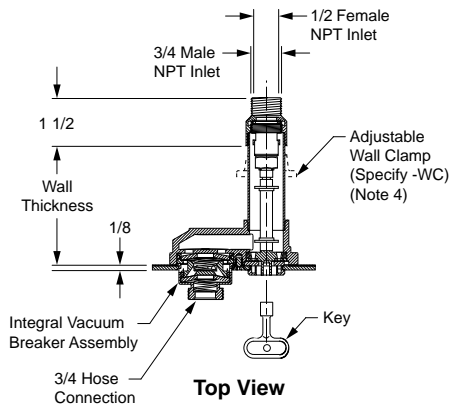
For Hydrant Parts Repair Kit, See Pg. 340

NOTES:

1. Recommended wall opening 2 1/4 x 4".
2. When ordering, specify wall thickness in 1 increments as follows
4,5,6,7,8.....24.
3. All Jay R. Smith hydrants are manufactured with "NO-LEAD" brazing rings, and USDA approved lubricants.
4. When wall clamp -WC is desired, increase wall thickness dimension by 2".
5. Add 3/4" to Overall Length When Specified*
6. When specifying Fig. 5619 (-SAP) the wall thickness shall be 2".

Meets ANSI A112.21.3M Specifications
Complies w/ ASSE 1019-B,1052 and 1053.
IAPMO Listed- File #2749
Patent No. US 6,752,167

Seepage of a small amount of water may occur from the vacuum breaker upon the initial opening and closing of this hydrant. This is normal operation.

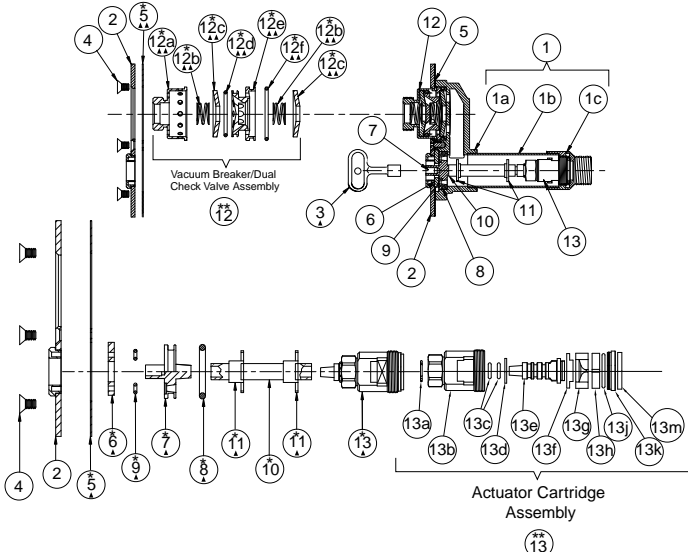


Front View

Fig. 5619

WALL THICKNESS	3/4" INLET	APPROX WEIGHT LBS
-SAP	471.00	7
04 - 07"	622.00	8
08 - 15"	712.00	9
16 - 23"	800.00	10
24 - 30"	889.00	12

REGULARLY FURNISHED: Bronze Quarter Turn Non-Freeze Automatic Draining Hydrant with Stainless Steel Face, Hose Connection, Integral Vacuum Breaker and Dual Check Valve and "T" Handle Key.



HYDRANT PARTS LIST			
NO.	DESCRIPTION	NO.	DESCRIPTION
1	Casing Assembly	10	Operator Rod
1a	Head	11	Operator Rod Guides (2)
1b	Casing	12	Vacuum Breaker/Dual Check Valve Assembly
1c	Valve Housing	12a	**Vacuum Breaker Housing
2	Wall Plate Assembly	12b	**Spring (2)
3	Key	12c	**Cone Washer (2)
4	Wall Plate Securing Screw (5)	12d	**Small O-Ring
5	Wall Plate Gasket	12e	**Flow Diverter
6	Stationary Operator Piece	12f	**Large O-Ring
7	Movable Operator Piece	13	Actuator Cartridge Assembly
8	Movable Operator O-Ring	13a	**Retaining Ring
9	Drain Hole Seal (2)	13b	**Valve Body
		13c	**Actuator O-Ring (2)
		13d	**Nylon Thrust Spacer
		13e	**Valve Actuator
		13f	**Nylon Thrust Washer
		13g	**Rotating Ceramic Disc
		13h	**Fixed Ceramic Disc
		13j	**O-Ring
		13k	**O-Ring Gasket Retainer
		13m	**Rubber Seal

▲ These Replacement Parts Available in HPRK-19

▲▲ These Replacement Parts Available in HPRK-19VB

* These Parts Accessible from Face of Hydrant by Removing Wall Plate Assembly.

** Parts supplied as an assembly only, see part 12 or 13.

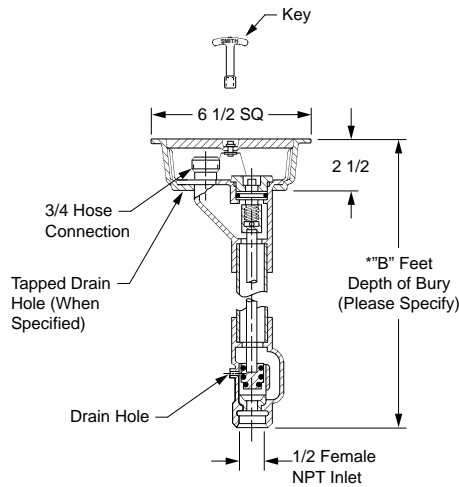
HYDRANTS

SMITH®

FIG. 5810 SER. BRONZE NON-FREEZE GROUND HYDRANT W/ROUGH BRONZE BOX AND BRONZE CASING



FUNCTION: A Hydrant with a hinged covered box, for positive protection against freezing when buried outside or in unheated areas and the closing valve is located below the frost line. When hydrant is shut off, water is drained from the casing through the drain hole in the valve housing. The locking cover prevents unauthorized use.



Side View

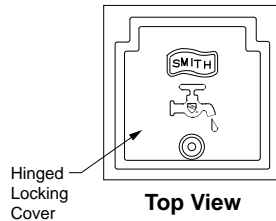


Fig. 5810

OPTIONS:

-CL	Cylinder Lock	117.00
-CP	Chrome Plated Box	190.00
-H	3/4" Vacuum Breaker	N/C
-HC1	1" Hose Conn Adaptor	133.00
-LD	Less Drain Hole	N/C
-N	1/8" NPT Drain Hole in Box	117.00
-NB	Nickel Bronze Box.....	173.00
-NV	1/8" NPT Drain Hole in Housing	N/C
-PB	Polished Bronze Box.....	38.00
-W	"Water" on Cover	N/C

ADD

For Hydrant Parts Repair Kit, See Pg. 340

NOTES:

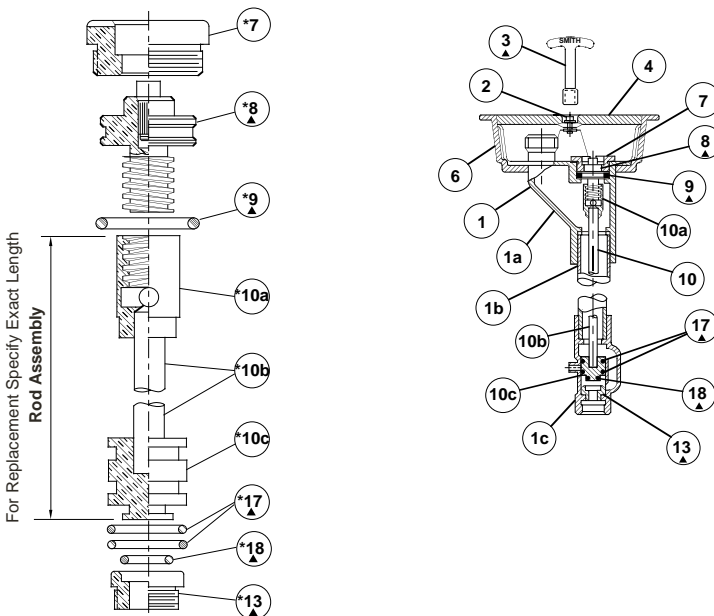
1. Recommended Box-out 5 3/4 x 5 3/4".
2. All Jay R. Smith hydrants are manufactured with "NO-LEAD" brazing rings and USDA approved lubricants.

Addition of vacuum breaker will not allow draining of the casing. Smith is not responsible for any casings that burst or related incidents if the hydrant is supplied with a vacuum breaker.

*B = 9 1/2" when specified (-SAP)

B FEET DEPTH OF BURY	5810 3/4" INLET	5811 1" INLET	APPROX WEIGHT LBS
-SAP	1,261.00	1,521.00	8
02'	1,261.00	1,521.00	17
03'	1,360.00	1,620.00	21
04'	1,460.00	1,719.00	25
05'	1,559.00	1,818.00	33
06'	1,658.00	1,916.00	39
07'	1,756.00	2,015.00	45
08'	1,855.00	2,115.00	52
09'	1,954.00	2,213.00	54
10'	2,054.00	2,312.00	56

REGULARLY FURNISHED: Bronze Non-Freeze Ground Hydrant with "T" Handle Key and Bronze Hydrant Box. Inlet Size Furnished as Indicated by Figure Number Selected.



REPLACEMENT PARTS - SPECIFY FIG. NO. WHEN ORDERING

No.	DESCRIPTION	No.	DESCRIPTION
1	Head/Casing Assembly	8	Operating Screw
1a	Head	9	Operating Screw "O" Ring
1b	Casing	10	Operating Rod Assembly
1c	Valve Housing	10a	Coupling
2	Locking Device	10b	Rod
3	Key	10c	Plunger
4	Cover	13	Removable Seat
5	Hydrant Cover Hinge Pins (2)	17	Plunger "O" Ring
6	Box	18	Plunger "O" Ring
7	Face Nut		

▲These Replacement Parts Available in HPRK-41

*These parts are accessible from face of hydrant by removing face nut.

MAINTENANCE INSTRUCTIONS

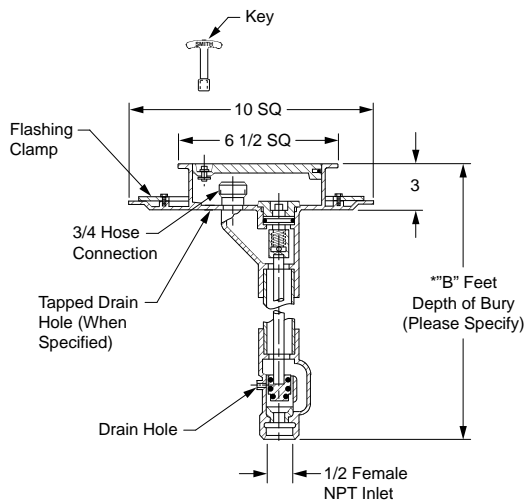
1. Shut off water supply.
2. Remove face nut.
3. Pull stem out for complete access to all working parts.
4. Check all working parts for replacement.
5. Replace complete stem assembly and face nut.

HYDRANTS

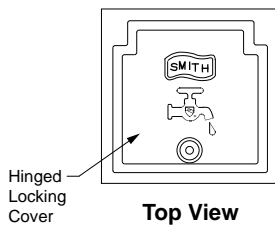


FIG. 5810-F SER. BRONZE NON-FREEZE GROUND HYDRANT W/ROUGH BRONZE BOX, INTEGRAL FLASHING FLANGE AND CLAMP

FUNCTION: A Hydrant with a hinged covered box, for positive protection against freezing when buried outside or in unheated areas and the closing valve is located below the frost line. Used in watertight floor construction where an integrally cast flashing flange is required to receive and secure the waterproofing membranes. When hydrant is shut off, water is drained from the casing through the drain hole in the valve housing. The locking cover prevents unauthorized use.



Side View



Top View

Fig. 5810F

OPTIONS:

-CP	Chrome Plated Box.....	POA
-H	3/4" Vacuum Breaker (5810 Only)	86.00
-HC1	1" Hose Conn Adaptor	133.00
-LD	Less Drain Hole	N/C
-N	1/8" NPT Drain Hole in Box	117.00
-NB	Nickel Bronze Box.....	173.00
-NV	1/8" NPT Drain Hole in Hsg	N/C
-PB	Polished Bronze Box.....	38.00
-W	"Water" on Cover	N/C

DEDUCT

-LFC	Less Flashing Clamp Deduct	46.00
------	----------------------------------	-------

For Hydrant Parts Repair Kit, See Pg. 340

NOTES:

1. Recommended Box-out 10 1/2 x 10 1/2".
2. All Jay R. Smith hydrants are manufactured with "NO-LEAD" brazing rings and USDA approved lubricants.

Addition of vacuum breaker will not allow draining of the casing. Smith is not responsible for any casings that burst or related incidents if the hydrant is supplied with a vacuum breaker.

*B = 9 1/2" when specified (-SAP)

B FEET DEPTH OF BURY	5810-F 3/4" INLET	5811-F 1" INLET	APPROX WEIGHT LBS
-SAP	1,831.00	2,091.00	13
02'	1,831.00	2,091.00	22
03'	1,930.00	2,190.00	26
04'	2,030.00	2,289.00	30
05'	2,129.00	2,387.00	38
06'	2,227.00	2,486.00	44
07'	2,326.00	2,585.00	50
08'	2,425.00	2,684.00	57
09'	2,524.00	2,783.00	64
10'	2,624.00	2,883.00	68

REGULARLY FURNISHED: Bronze Non-Freeze Ground Hydrant with "T" Handle Key, Bronze Hydrant Box with Flashing Flange and Clamp. Inlet Size Furnished as Indicated by Figure Number Selected.

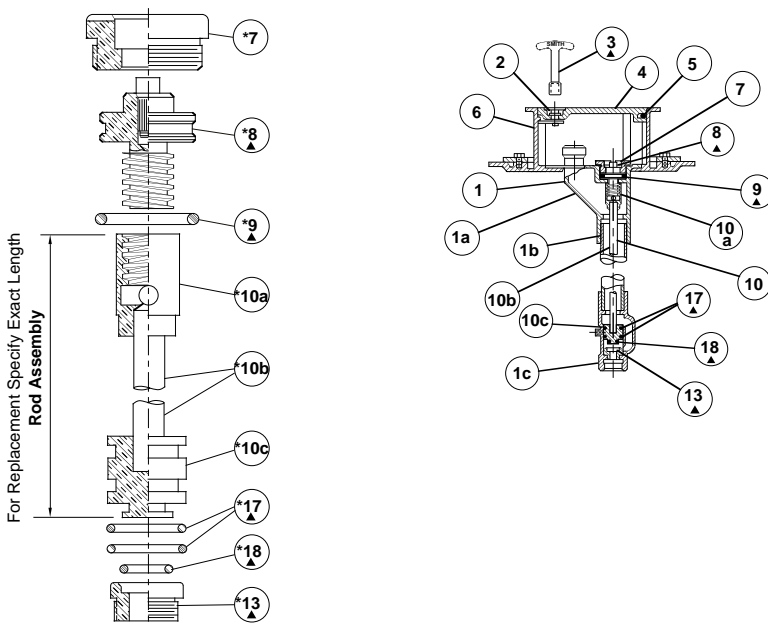
REPLACEMENT PARTS - SPECIFY FIG. NO. WHEN ORDERING			
No.	DESCRIPTION	No.	DESCRIPTION
1	Head/Casing Assembly	8	Operating Screw
1a	Head	9	Operating Screw "O" Ring
1b	Casing	10	Operating Rod Assembly
1c	Valve Housing	10a	Coupling
2	Locking Device	10b	Rod
3	Key	10c	Plunger
4	Cover	13	Removable Seat
5	Hydrant Cover Hinge Pins (2)	17	Plunger "O" Ring
6	Box	18	Plunger "O" Ring
7	Face Nut		

▲ These Replacement Parts Available in HPRK-41

*These parts are accessible from face of hydrant by removing face nut.

MAINTENANCE INSTRUCTIONS

1. Shut off water supply.
2. Remove face nut.
3. Pull stem out for complete access to all working parts.
4. Check all working parts for replacement.
5. Replace complete stem assembly and face nut.



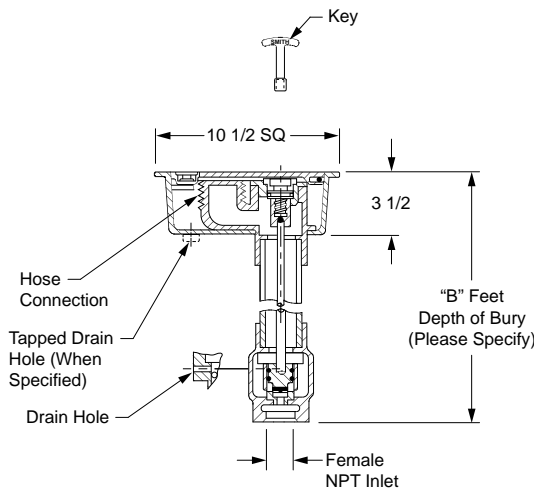
HYDRANTS

SMITH®

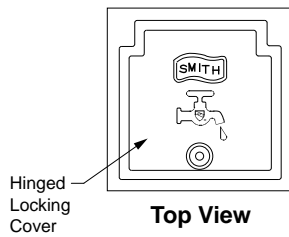
FIG. 5812 SER. BRONZE NON-FREEZE GROUND HYDRANT W/CAST IRON BOX W/ 1 1/4", 1 1/2" OR 2" CONNECTIONS



FUNCTION: A Hydrant with a hinged covered box, for positive protection against freezing when buried outside or in unheated areas and the closing valve is located below the frost line. When hydrant is shut off, water is drained from the casing through the drain hole in the valve housing. The locking cover prevents unauthorized use.



Side View



Top View

Fig. 5812

OPTIONS:

-N	1/8" NPT Drain Hole in Box	117.00
-NB	Nickel Bronze Box.....	364.00
-NV	1/8" NPT Drain Hole in Hsg	N/C
-PB	Polished Bronze Box.....	207.00
-RB	Rough Bronze Box	117.00
-W	"Water" on Cover	N/C

ADD

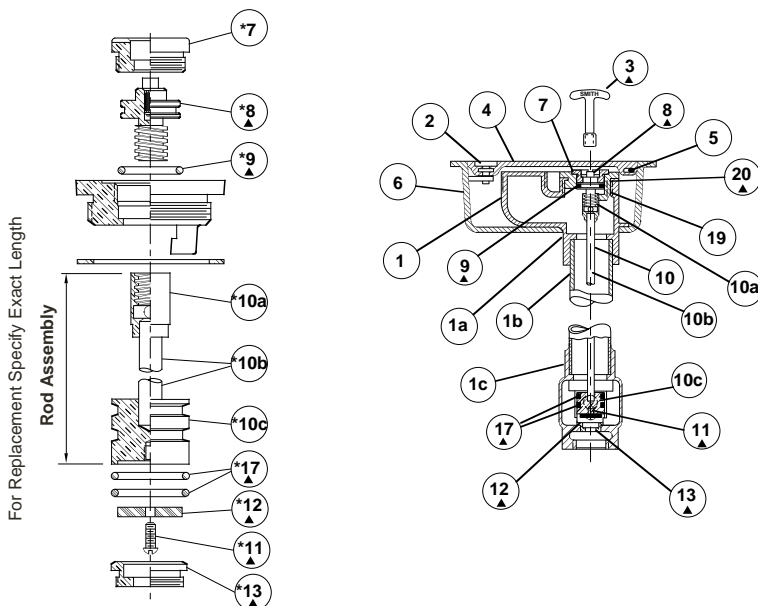
For Hydrant Parts Repair Kit, See Pg. 340

NOTES:

1. Recommended Box-out 9 1/2 x 9 1/2".
2. All Jay R. Smith hydrants are manufactured with "NO-LEAD" brazing rings and USDA approved lubricants.

B FEET DEPTH OF BURY	5812 1 1/4" INLET	5813 1 1/2" INLET	5814 2" INLET	APPROX WEIGHT LBS
-SAP	5,365.00	5,890.00	6,875.00	23
02'	5,365.00	5,890.00	6,875.00	42
03'	5,543.00	6,113.00	7,167.00	47
04'	5,723.00	6,338.00	7,461.00	52
05'	5,901.00	6,562.00	7,756.00	57
06'	6,079.00	6,787.00	8,051.00	62
07'	6,259.00	7,011.00	8,344.00	67
08'	6,436.00	7,234.00	8,638.00	72

REGULARLY FURNISHED: Bronze Non-Freeze Ground Hydrant with "T" Handle Key, Cast Iron Hydrant Box Inlet and Hose Connection. Size Furnished as Indicated by Figure Number Selected.



REPLACEMENT PARTS - SPECIFY FIG. NO. WHEN ORDERING

No.	DESCRIPTION	No.	DESCRIPTION
1	Head/Casing Assembly	9	Operating Screw "O" Ring
1a	Head	10	Operating Rod Assembly
1b	Casing	10a	Coupling
1c	Valve Housing	10b	Rod
2	Locking Device	10c	Plunger
3	Key	11	Washer Screw (No. 10-24)
4	Cover	12	Washer (Neoprene)
5	Hydrant Cover Hinge Pins (2)	13	Removable Seat
6	Box	17	Plunger "O" Ring
7	Face Nut	19	Face Nut Seat
8	Operating Screw	20	Face Nut Seat Gasket

▲These Replacement Parts Available in HPRK-5

*These parts are accessible from face of hydrant by removing face nut.

MAINTENANCE INSTRUCTIONS

1. Shut off water supply.
2. Remove face nut.
3. Pull stem out for complete access to all working parts.
4. Check all working parts for replacement.
5. Replace complete stem assembly and face nut.

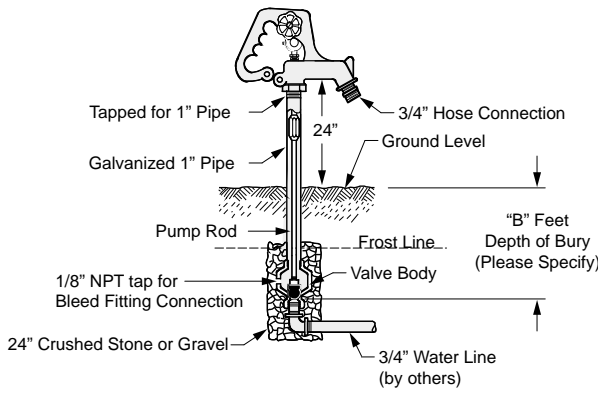
HYDRANTS

HYDRANTS

FIG. 5909 NON-FREEZE POST HYDRANT WITH GALVANIZED CASING



FUNCTION: Used where an above ground water outlet is required in areas which are subject to freezing temperatures. Freezing is prevented by burying the valve housing below the frost line and draining water from the casing after shut-off.



OPTIONS:

-H	Vacuum Breaker	ADD 86.00
-NV	1/8" NPT Drain Hole in Valve Housing.....	N/C

NOTE:

Addition of vacuum breaker will not allow draining of the casing. Smith is not responsible for any casings that burst or related incidents if the hydrant is supplied with a vacuum breaker.

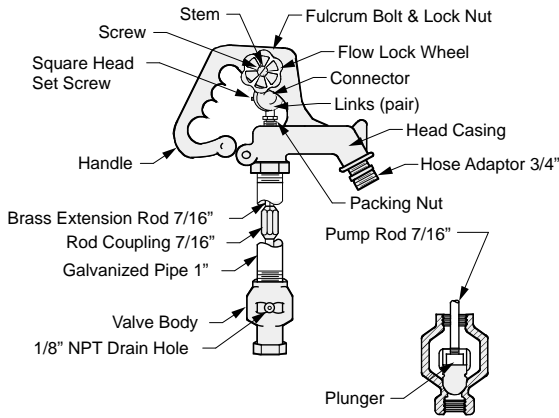


Fig. 5909

B FEET DEPTH OF BURY	3/4" INLET	APPROX WEIGHT LBS
01'	689.00	10
02'	727.00	14
03'	766.00	18
04'	807.00	22
05'	845.00	26
06'	883.00	30

REGULARLY FURNISHED:

Non-Freeze Post Hydrant with Galvanized Casing and Adjustable Flow Wheel Lock Handle.

HYDRANTS

FIG. 5910 SER. NON-FREEZE POST HYDRANT WITH BRONZE CASING



FUNCTION: Used where an above ground water outlet is required in areas which are subject to freezing temperatures. Freezing is prevented by burying the valve housing below the frost line and draining water from the casing after shut-off.

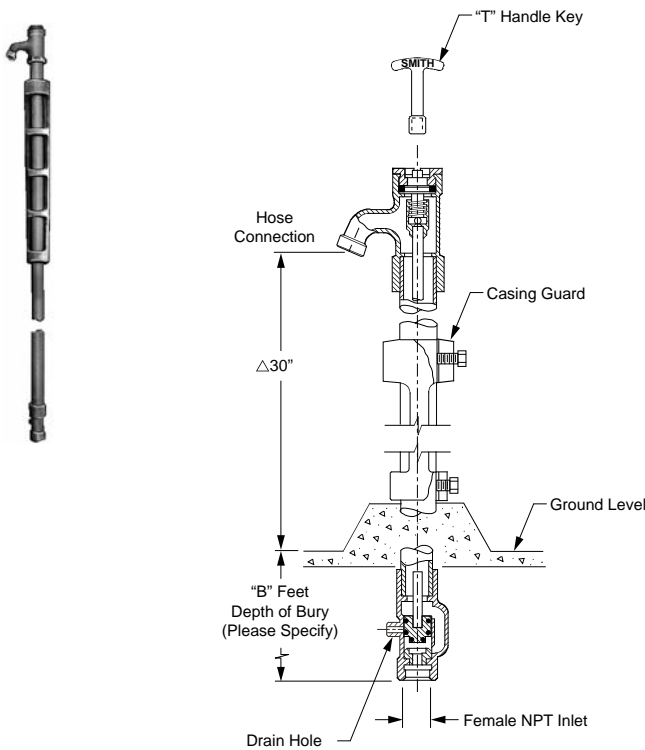


Fig. 5910

OPTIONS:

-AG	Aluminum Casing Guard	N/C	ADD
-H	3/4" Vacuum Breaker (5910 Only)	86.00	
-NV	1/8" NPT Drain Hole in Housing	N/C	
-WH	Secured Wheel Handle	182.00	

For Hydrant Parts Repair Kit, See Pg. 340

▲ Regularly furnished (unless otherwise specified)

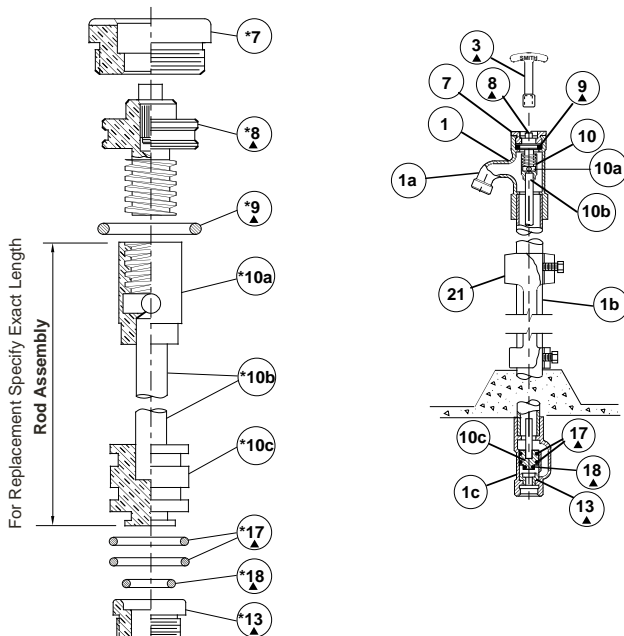
NOTES:

1. All Jay R. Smith hydrants are manufactured with "NO-LEAD" brazing rings and USDA approved lubricants.

Addition of vacuum breaker will not allow draining of the casing. Smith is not responsible for any casings that burst or related incidents if the hydrant is supplied with a vacuum breaker.

B FEET DEPTH OF BURY	5910 3/4" INLET	5911 1" INLET	APPROX WEIGHT LBS
02'	1,263.00	1,710.00	25
03'	1,369.00	1,818.00	29
04'	1,476.00	1,925.00	33
05'	1,585.00	2,032.00	37
06'	1,691.00	2,140.00	41
07'	1,799.00	2,246.00	45
08'	1,904.00	2,353.00	49

REGULARLY FURNISHED: Bronze Non-Freezing Post Hydrant with Cast Iron Casing Guard, and "T" Handle Key. Inlet and Hose Connection Size Furnished as Indicated by Figure Number Selected.



REPLACEMENT PARTS LIST-SPECIFY FIGURE NO. WHEN ORDERING			
No.	DESCRIPTION	No.	DESCRIPTION
1	Head/Casing Assembly	10	Operating Rod Assembly
1a	Head	10a	Coupling
1b	Casing	10b	Rod
1c	Valve Housing	10c	Plunger
3	Key	13	Removable Seat
7	Face Nut	17	Plunger "O" Ring
8	Operating Screw	18	Plunger "O" Ring
9	Operating Screw "O" Ring	21	Casing Guard

▲ These replacement parts available in HPRK-41

*These parts are accessible from face of hydrant by removing face nut

MAINTENANCE INSTRUCTIONS

1. Shut off water supply.
2. Remove face nut.
3. Pull stem out for complete access to all working parts
4. Check all working parts for replacement.
5. Replace complete stem assembly and face nut.

HYDRANTS

FIG. 5912 SER. NON-FREEZE POST HYDRANT W/CAST IRON CASING GUARD W/1 1/4", 1 1/2" OR 2" CONNECTIONS

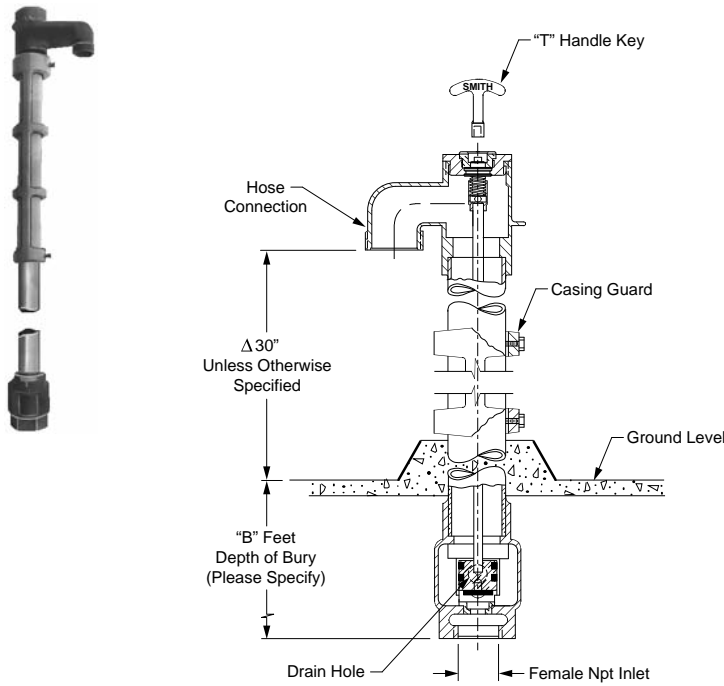


FUNCTION: Used where an above ground water outlet is required in areas which are subject to freezing temperatures. Freezing is prevented by burying the valve housing below the frost line and draining water from the casing after shut-off.

OPTIONS:

-AG	Aluminum Casing Guard	ADD
-NV	1/8" Drain Hole in Housing	N/C
-WH	Secured Wheel Handle	N/C
		182.00

For Hydrant Parts Repair Kit, See Pg. 340



NOTES:

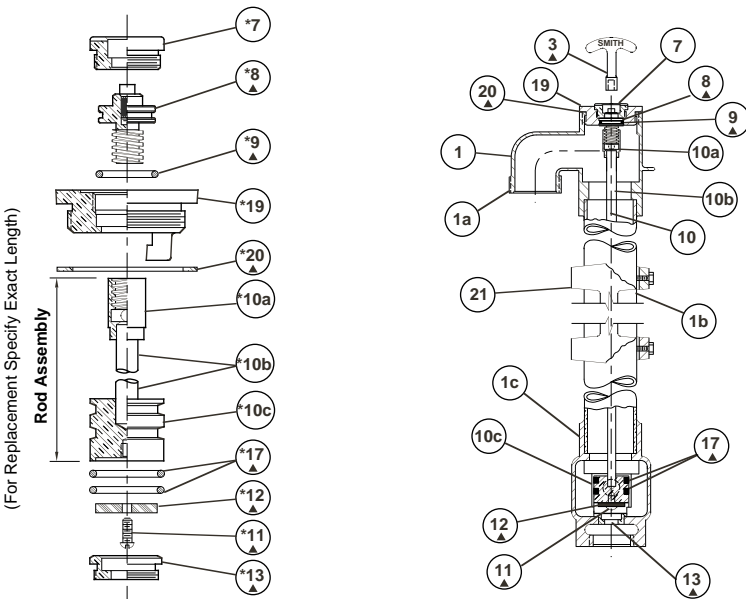
1. All Jay R. Smith hydrants are manufactured with "NO-LEAD" brazing rings and USDA approved lubricants.

Δ Regularly furnished (unless otherwise specified)

Fig. 5912

B FEET DEPTH OF BURY	5912 1 1/4" INLET	5913 1 1/2" INLET	5914 2" INLET	APPROX WEIGHT LBS
-SAP	3,035.00	4,232.00	5,259.00	30
02'	3,035.00	4,232.00	5,259.00	57
03'	3,348.00	4,486.00	5,520.00	62
04'	3,660.00	4,742.00	5,780.00	67
05'	3,975.00	4,998.00	6,040.00	74
06'	4,287.00	5,252.00	6,299.00	77
07'	4,602.00	5,506.00	6,560.00	82
08'	4,915.00	5,762.00	6,819.00	87

REGULARLY FURNISHED: Bronze Non-freeze Post Hydrant with Cast Iron Casing Guard, and "T" Handle Key. Inlet and Hose Connection Size Furnished as Indicated by Figure Number Selected.



REPLACEMENT PARTS LIST - SPECIFY FIGURE NO. WHEN ORDERING			
No.	DESCRIPTION	No.	DESCRIPTION
1	Head/Casing Assembly	10b	Rod
1a	Head	10c	Plunger
1b	Casing	11	Washer Screw (No. 10-24)
1c	Valve Housing	12	Washer (Neoprene)
3	Key	13	Removable Seat
7	Face Nut	17	Plunger "O" Ring
8	Operating Screw	19	Face Nut Seat
9	Operating Screw "O" Ring	20	Face Nut Seat Gasket
10	Operating Rod Assembly	21	Casing Guard
10a	Coupling		

▲These Replacement Parts Available in HPRK -5

MAINTENANCE INSTRUCTIONS

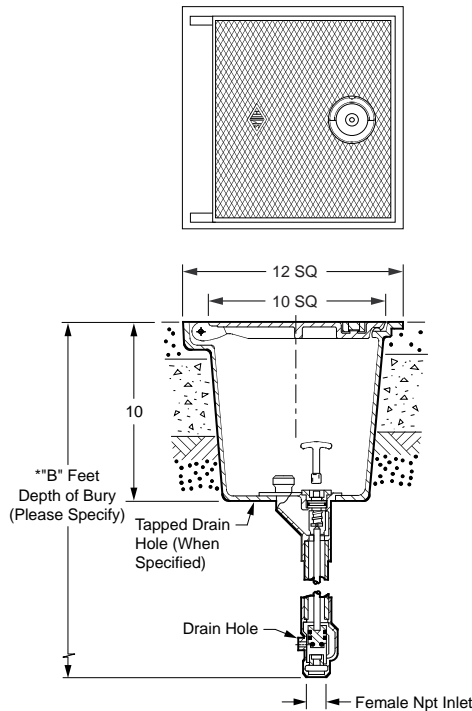
1. Shut off water supply.
2. Remove face nut.
3. Pull stem out for complete access to all working parts.
4. Check all working parts for replacement.
5. Replace complete stem assembly and face nut.

HYDRANTS

FIG. 5950 SER. NON-FREEZE BOX TYPE GROUND HYDRANT W/HEAVY DUTY COVER



FUNCTION: Hydrant with heavy duty hinged cover box, particularly suitable for traffic areas which require a flush with ground non-freeze hydrant. Ideal for parking decks, outside exhibition areas, etc. The closing valve is located below the frost line. When hydrant is shut off water is drained from the casing through the drain hole in the valve housing.



OPTIONS:

		ADD
-HC1	1" Hose Connection Adaptor.....	133.00
-N	1/8" Drain Hole in Box	117.00
-NB	Nickel Bronze Top	1,884.00
-NV	1/8" Drain Hole in Housing	N/C
-PB	Polished Bronze Top	1,573.00
-RB	Rough Bronze Top	1,256.00
-W	"Water" on Cover	95.00

For Hydrant Parts Repair Kit, See Pg. 340

NOTES:

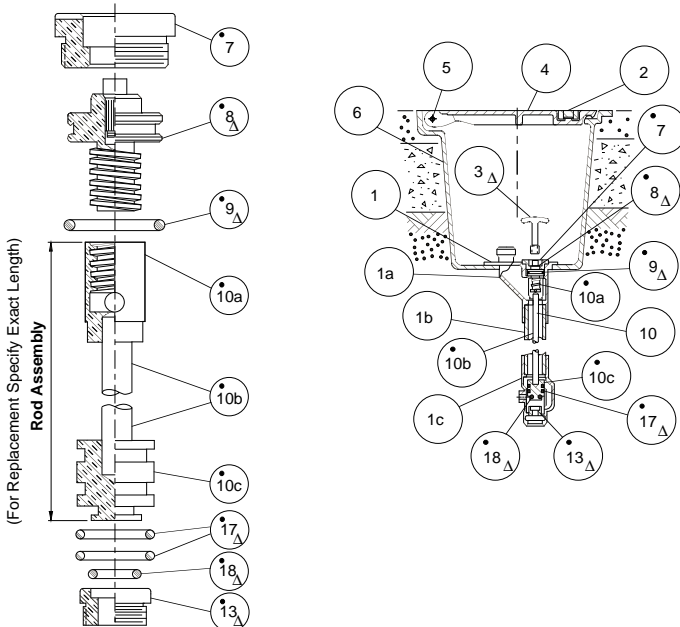
1. All Jay R. Smith hydrants are manufactured with "NO-LEAD" brazing rings and USDA approved lubricants.

Addition of vacuum breaker will not allow draining of the casing. Smith is not responsible for any casings that burst or related incidents if the hydrant is supplied with a vacuum breaker.

Fig. 5950

B FEET DEPTH OF BURY	5950 3/4" INLET	5951 1" INLET	APPROX WEIGHT LBS
-SAP	2,384.00	2,908.00	81
02'	2,384.00	2,908.00	81
03'	2,483.00	3,006.00	85
04'	2,581.00	3,105.00	93
05'	2,680.00	3,205.00	97
06'	2,780.00	3,303.00	101
07'	2,879.00	3,404.00	105
08'	2,977.00	3,503.00	109

REGULARLY FURNISHED: Bronze Hydrant with Bronze Casing. "T" Handle Key and Cast Iron Box with Heavy Duty Cover with Lifting Device.



REPLACEMENT PARTS LIST-SPECIFY FIGURE NO. WHEN ORDERING			
No.	DESCRIPTION	No.	DESCRIPTION
1	Head/Casing Assembly	8	Operating Screw
1a	Head	9	Operating Screw "O" Ring
1b	Casing	10	Operating Rod Assembly
1c	Valve Housing	10a	Coupling
2	Lifting Device	10b	Rod
3	Key	10c	Plunger
4	Cover	13	Removable Seat
5	Hydrant Cover Hinge Pins(2)	17	Plunger "O" Ring
6	Box	18	Plunger "O" Ring
7	Face Nut		

Δ These replacement parts available in HPRK-41.

* These parts are accessible from face of hydrant by removing face nut.

MAINTENANCE INSTRUCTIONS

1. Shut off water supply.
2. Remove face nut.
3. Pull stem out for complete access to all working parts.
4. Check all working parts for replacement.
5. Replace complete stem assembly and face nut.

HYDRANTS