



JAY R. SMITH MFG. CO.
 DIVISION OF SMITH INDUSTRIES, INC.
 POST OFFICE BOX 3237
 MONTGOMERY, ALABAMA 36109-0237 (USA)
 TEL: 334-277-8520 FAX: 334-272-7396 www.jrsmith.com



MEMBER OF:

LOCATION

C

DRAWING NUMBER
S1074-SO

SIZE
A

SCALE:
NONE

DATE:
08/11/05

APPROVED BY:
AM

CHECKED BY:
AM

DRAWN BY:
JJ

1074-SO

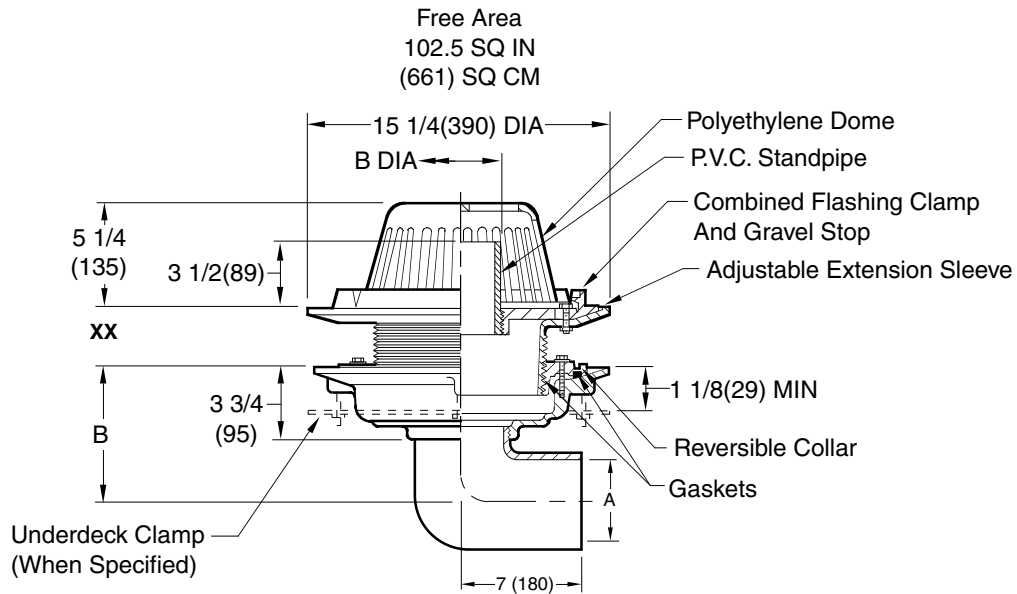
WE CAN ASSUME NO RESPONSIBILITY FOR USE OF SUPERSIZED OR VOID DATA

DIMENSIONS ARE SUBJECT TO MANUFACTURERS TOLERANCE AND CHANGE WITHOUT NOTICE

LARGE GENERAL PURPOSE ROOF DRAINS

ADJUSTABLE TOP WITH STANDPIPE

FUNCTION: Used in flat roofs of any construction where a constant height of water is desired on the roof. It is also used on conventional roofs as a safety overflow, which receives water only when the build-up is greater than the setting of the cut standpipe. Standpipe type water dam can be cut to achieve various water depths on the roof. Wide clamping surface holds flashing and roofing materials without puncturing. Large low profile dome provides sufficient free area for quick drainage of rain water and protects the drain sump and connected piping from the intrusion of debris.



A(Pipe Size)	02(50)	03(75)	04(100)	05(125)	06(150)
B (DIA)	5 1/2(140)	6(150)	6 1/4(160)	7(180)	7 1/2(190)

XX	MIN	MAX
Low Position	1 1/4(32)	2 1/2(64)
High Position	2 1/4(57)	4 (100)

Fig. 1074-SO NO-HUB SIDE OUTLET

recommended deck opening

with suffix-R	17(430) DIA
less suffix-R	14(355) DIA

REGULARLY FURNISHED:

Duco Cast Iron Body with Side Outlet Elbow, Adjustable Extension Sleeve, Reversible Collar, P.V.C. Standpipe, Polyethylene Dome and Combined Flashing Clamp and Gravel Stop.

VARIATIONS:

- Extension (Specify Height) -E
 - E02, 2"(51)
 - E04, 4"(100)
 - E06, 6"(150)
- "L" Shaped Underdeck Clamp -CL
- Secondary Flashing Clamp -C2
- Sump Receiver -R
- Underdeck Clamp -C
- Vandal Proof Dome -U
- T Threaded Outlet

OPTIONAL MATERIALS:

- ▲ Aluminum Dome -AD
- Bronze Standpipe -BZS
- ▲ Cast Iron Dome -CID
- Cast Iron Standpipe -CIS
- Galvanized Cast Iron Body & Collar -G
- ▲ Galvanized Cast Iron Dome -CIDG
- ▲ Rough Bronze Dome -RBD

NOTE: Dimensions shown in parentheses are in millimeters.

▲ Optional domes' free area are as follows:

Aluminum	98 (632)
Cast Iron	80 (516)
Bronze	95 (613)

REV.	DATE	DESCRIPTION	BY	CKD. BY
C B A	06/04/09 6-5-06 08/25/05	Added Optional Dome Notes Revised Dim Added No-Hub to Side Outlet	JJ TBW JJ	CL AM AM

WEIGHT POUNDS	VOLUME CUBIC FEET
------------------	----------------------

FIGURE NUMBER
1074-SO