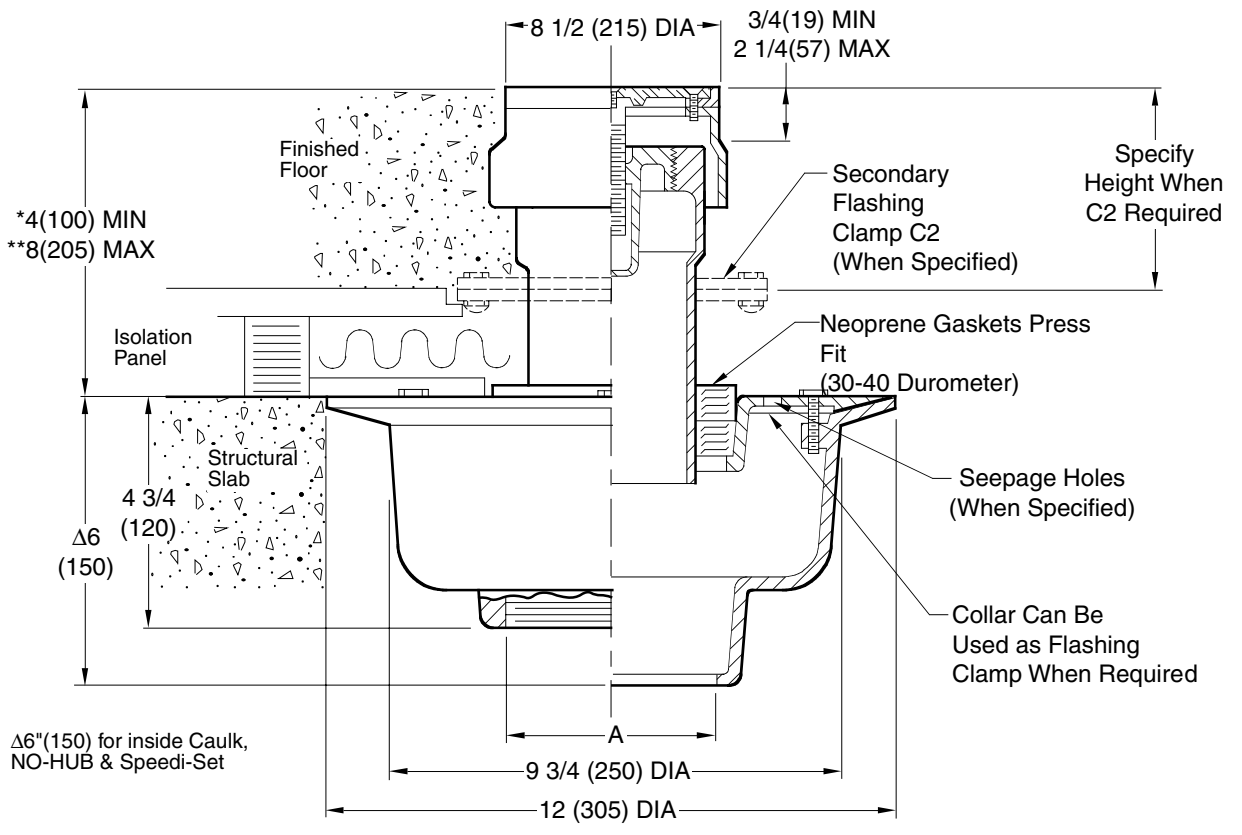


## CLEANOUT FOR FLOATING (ISOLATED) FLOOR SYSTEMS

**FUNCTION:** Used in areas which may have to be isolated from the other parts of the building; such as mechanical equipment rooms, studios, music rooms, laboratories and data processing areas.



NOTE: \*Add 1/4"(6) for Nickel Bronze or Polished Bronze Top.  
 \*\*If greater dimension than shown from lower flange to top is required specify a longer nipple.

A (Pipe Size) = 02(50), 03(75), 04(100)

Fig. 9350C . . . CAULK  
 Fig. 9350T . . . THREADED

**REGULARLY FURNISHED:**

Duco Cast Iron Lower Body and Flashing Collar, Duco Cast Iron Adjustable Ferrule and Frame with Polished Bronze Top, Bronze Cleanout Plug in Ferrule and Neoprene Isolation Gasket

**VARIATIONS:**

- Safe-Set Sediment Bucket -B (Fig. 9341)
- Secondary Flashing Clamp -C2
- Seepage Holes (in collar) -WSH
- Sump Receiver Plate -R
- Underdeck Clamp -C
- L Speedi-Set Service Weight  
02(50), 3(75) & 4"(100) sizes only
- LXH Speedi-Set Extra Heavy  
02(50), 03(75) & 04"(100) sizes only
- Y NO-HUB Outlet

**OPTIONAL MATERIALS:**

- Galvanized Cast Iron -G (Lower Body)
- Nickel Bronze Top -NB
- Polished Bronze Top -PB

NOTE: Dimensions shown in parentheses are in millimeters.

DRAWING NUMBER **S9350**  
 SIZE **A**  
 SCALE: **NONE**  
 DATE: **11-12-84**  
 APPROVED BY: **TD**  
 CHECKED BY: **VGD**  
 DRAWN BY: **PJ**  
**9350**  
 FIGURE NUMBER

WE CAN ASSUME NO RESPONSIBILITY FOR USE OF SUPERSEDED OR VOID DATA

<b>C</b> <b>B</b> <b>A</b>	04/17/00 11/30/95 02/16/95	<b>Changed Metric Equivalents</b> <b>Added Millimeters</b> <b>Submittal Update</b>	<b>JJ</b> <b>EMB</b> <b>EMB</b>	<b>BS</b> <b>BS</b> <b>BS</b>	WEIGHT POUNDS	VOLUME CUBIC FEET	<b>FIGURE NUMBER</b> <h1 style="margin: 0;">9350</h1>
REV.	DATE	DESCRIPTION	BY	CKD. BY			