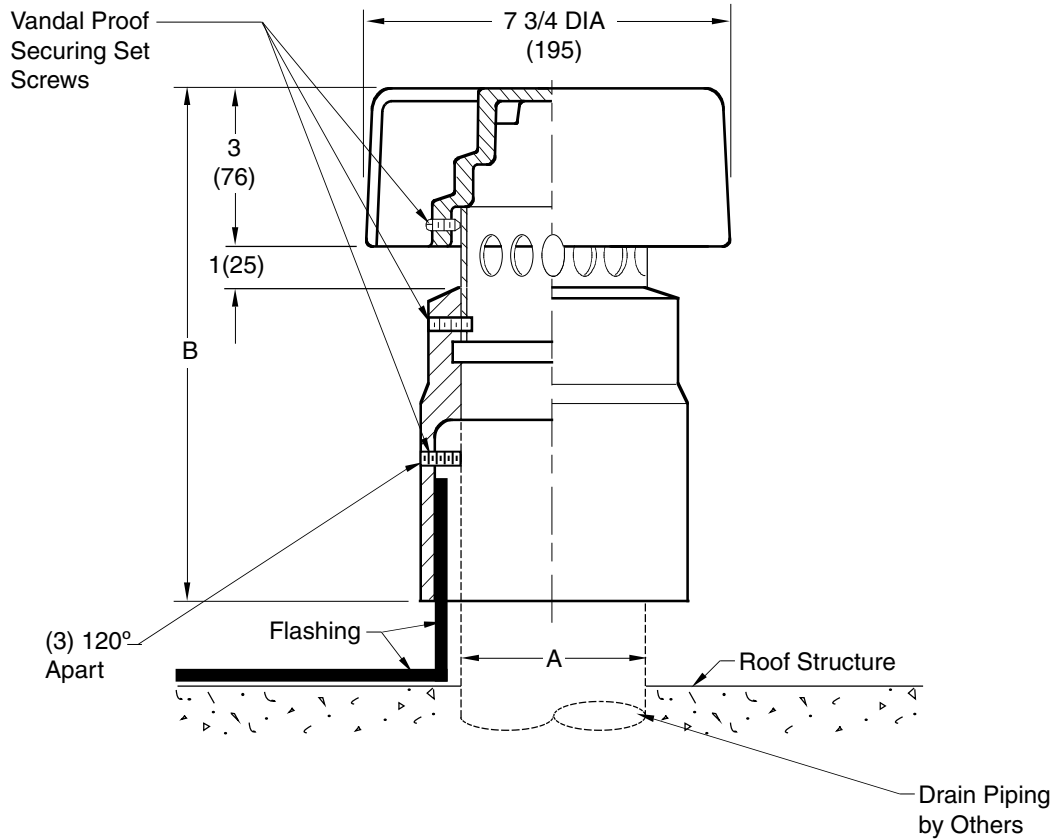


VANDAL RESISTANT ROOF OVERFLOW DRAIN

FUNCTION: An emergency roof overflow drain used in conjunction with a plain-end pipe installed through the roof slab requiring flashing capability and vandal proof dome (pipe cap). This unique arrangement allows for emergency overflow drainage while maintaining roof integrity and provided with a vandal proof dome pipe cap to prevent any debris from being placed in the system.



A	0150(48)	02(50)	03(75)	04(100)	05(125)	06(150)
B	8(205)	8(205)	8 1/2(215)	8 1/2(215)	9 1/2(240)	9 1/2(240)

REGULARLY FURNISHED:
 Duco Cast Iron Vandal Proof Dome
 (Pipe Cap) and Counter Flashing
 Body with a Slip-On Vandal Proof
 Connection

DRAWING NUMBER: **SQ-1-1733**
 SIZE: **A**
 SCALE: **NONE**
 DATE: **7-14-95**
 APPROVED BY: **JMc**
 CHECKED BY: **JCS**
 DRAWN BY: **CMD**
SQ-1-1733
 DIMENSIONS ARE SUBJECT TO MANUFACTURERS TOLERANCE AND CHANGE WITHOUT NOTICE

C	4-11-02	Updated Drawing	RN	CL	WEIGHT	VOLUME	FIGURE NUMBER
B	1-20-00	Updated Drawing	TBW	JCS	POUNDS	CUBIC FEET	SQ-1-1733
A	2-12-98	Chg'd Title	EMB	JCS			
REV.	DATE	DESCRIPTION	BY	CKD. BY			