



JAY R. SMITH MFG. CO.
 DIVISION OF SMITH INDUSTRIES, INC.
 POST OFFICE BOX 3237
 MONTGOMERY, ALABAMA 36109-0237 (USA)
 TEL: 334-277-8520 FAX: 334-272-7396 www.jrsmith.com



MEMBER OF:



LOCATION

SPECIAL SLOT TYPE TRENCH DRAIN

DRAWING NUMBER
SQ-9-1498

SIZE
A

SCALE:
NONE

DATE:
5-11-93

APPROVED BY:

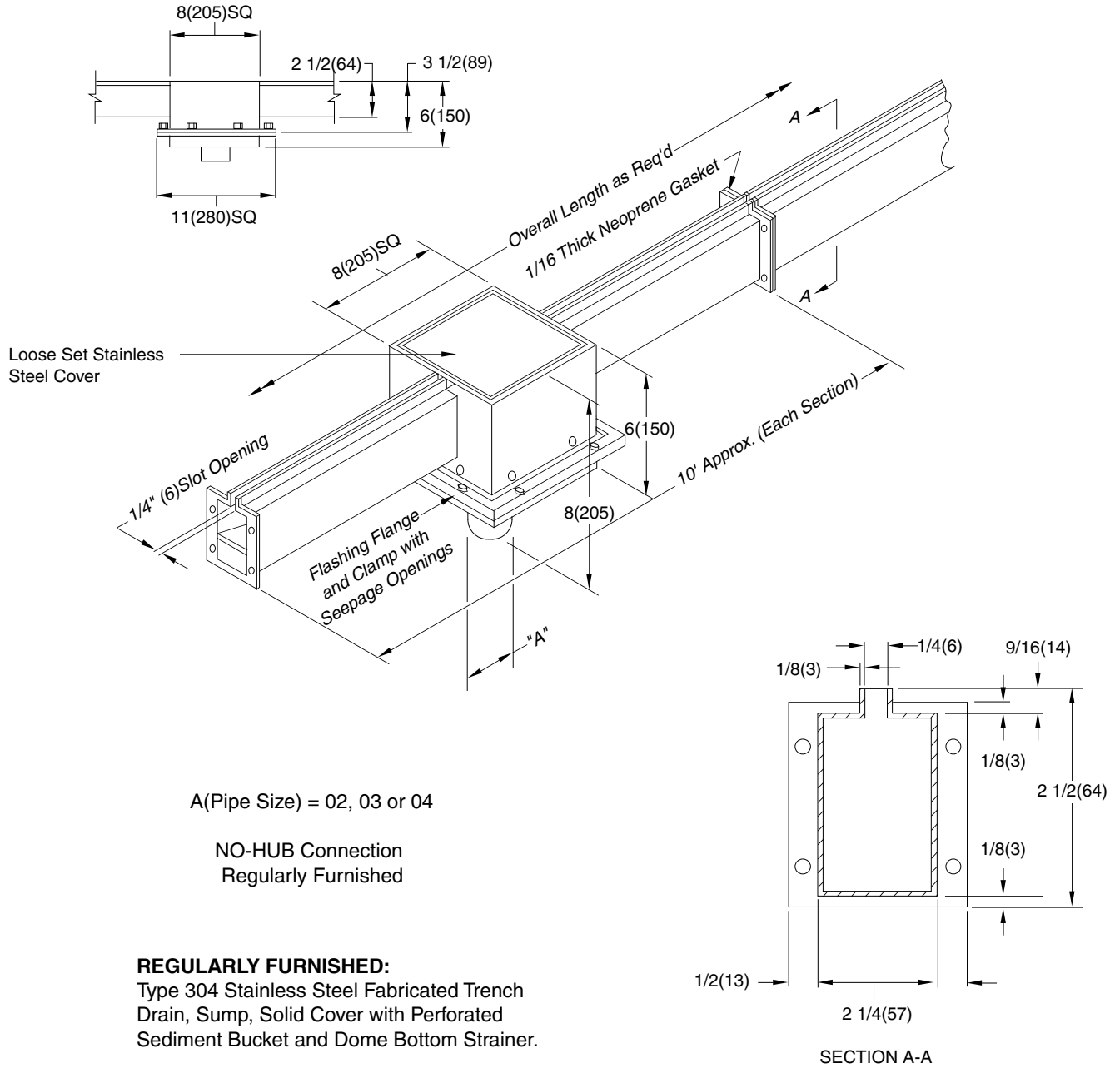
CHECKED BY:

DRAWN BY:
TWK

FIGURE NUMBER
SQ-9-1498

WE CAN ASSUME NO RESPONSIBILITY FOR USE OF SUPERSEDED OR VOID DATA

DIMENSIONS ARE SUBJECT TO MANUFACTURERS TOLERANCE AND CHANGE WITHOUT NOTICE



NOTE: Trench to have maximum of .09 inch per foot sloped bottom.

REV.	DATE	DESCRIPTION	BY	CKD. BY
D	9-18-1998	Added Millimeters	TBW	JM
C	4-19-93	Chg. Sump Dim. 8" was 6"	JCS	CS
B	3-24-93	Chg. Dim. add Fl. Flange & Clamp	JCS	CS
A	3-1-93	Revised Flange	JCS	CS

WEIGHT POUNDS	VOLUME CUBIC FEET	FIGURE NUMBER
		SQ-9-1498