

A



JAY R. SMITH MFG. CO.®
 DIVISION OF SMITH INDUSTRIES, INC.
 POST OFFICE BOX 3237
 MONTGOMERY, ALABAMA 36109-0237 (USA)
 TEL: 334-277-8520 FAX: 334-272-7396 www.jrsmith.com



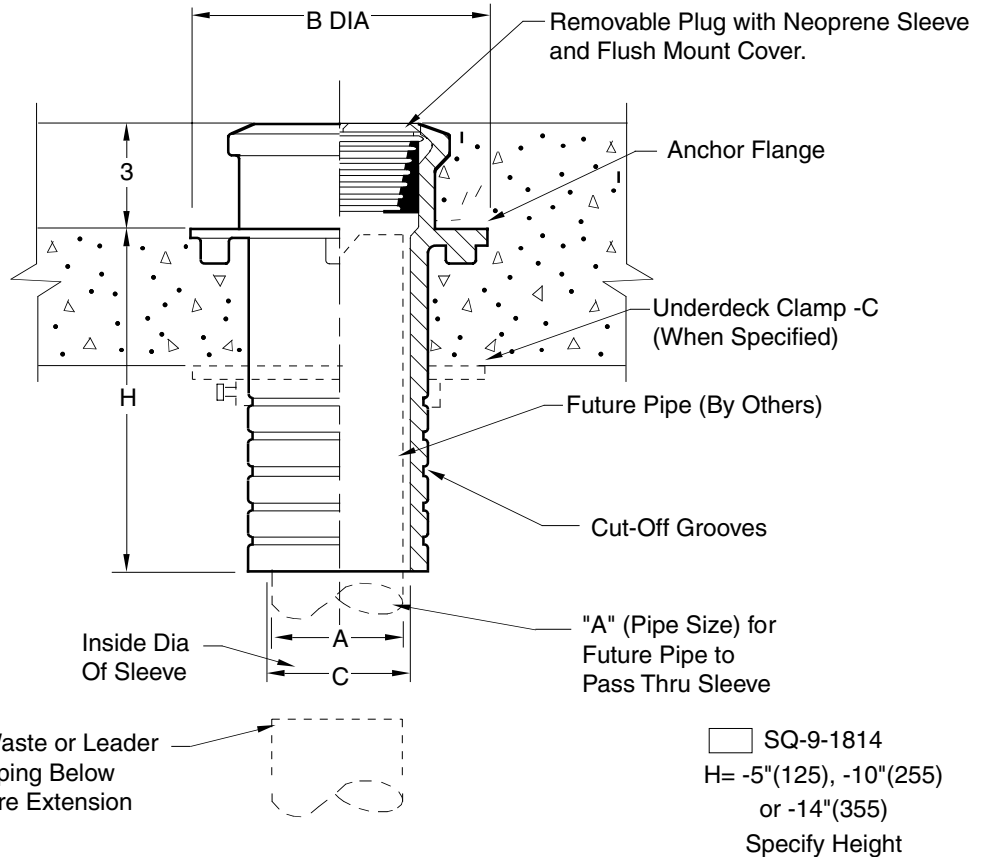
MEMBER OF:



LOCATION

ROOF ACCESSORY

STACK SLEEVE WITH REMOVABLE PLUG FOR FUTURE PIPE EXTENSION THROUGH ROOF OR FLOOR SLAB



A SIZE	050 (15) 075 (20) 01 (25)	0125 (30) 0150 (40) 02 (50)	0250 (65) 03 (75)	04 (100)	05 (125)	06 (150)	08 (200)	10 (255)	12 (305)
B DIA	5 (125)	6 3/4 (170)	7 1/2 (190)	8 1/2 (215)	9 1/2 (240)	10 1/2 (265)	13 1/2 (345)	15 1/2 (395)	19 (485)
C DIA	1 1/2 (38)	2 3/4 (70)	3 3/4 (95)	4 3/4 (120)	5 3/4 (145)	6 3/4 (170)	9 (230)	11 1/4(285)	13 1/4 (335)

△ A nominal size for standard XH soil pipe or schedule 40 steel pipe.

REGULARLY FURNISHED:

Duco Cast Iron Body with Anchor Flange, Flush Mount Threaded ABS Plug with Threaded Neoprene Sleeve and Countersunk Bolt.

VARIATIONS:

Underdeck Clamp -C

OPTIONAL MATERIALS:

Galvanized Cast Iron -G

DRAWING NUMBER
sSQ-9-1814SIZE
ASCALE:
NONEDATE:
12-3-95

APPROVED BY:

CHECKED BY:

DRAWN BY:
CMD

SQ-9-1814

WE CAN ASSUME NO RESPONSIBILITY FOR USE OF SUPERSEDED OR VOID DATA

DIMENSIONS ARE SUBJECT TO MANUFACTURERS TOLERANCE AND CHANGE WITHOUT NOTICE

FIGURE NUMBER

A	12/19/00	Revised Table and Notes	JJ	SJM
REV.	DATE	DESCRIPTION	BY	CKD. BY

WEIGHT
POUNDSVOLUME
CUBIC FEET

FIGURE NUMBER

SQ-9-1814