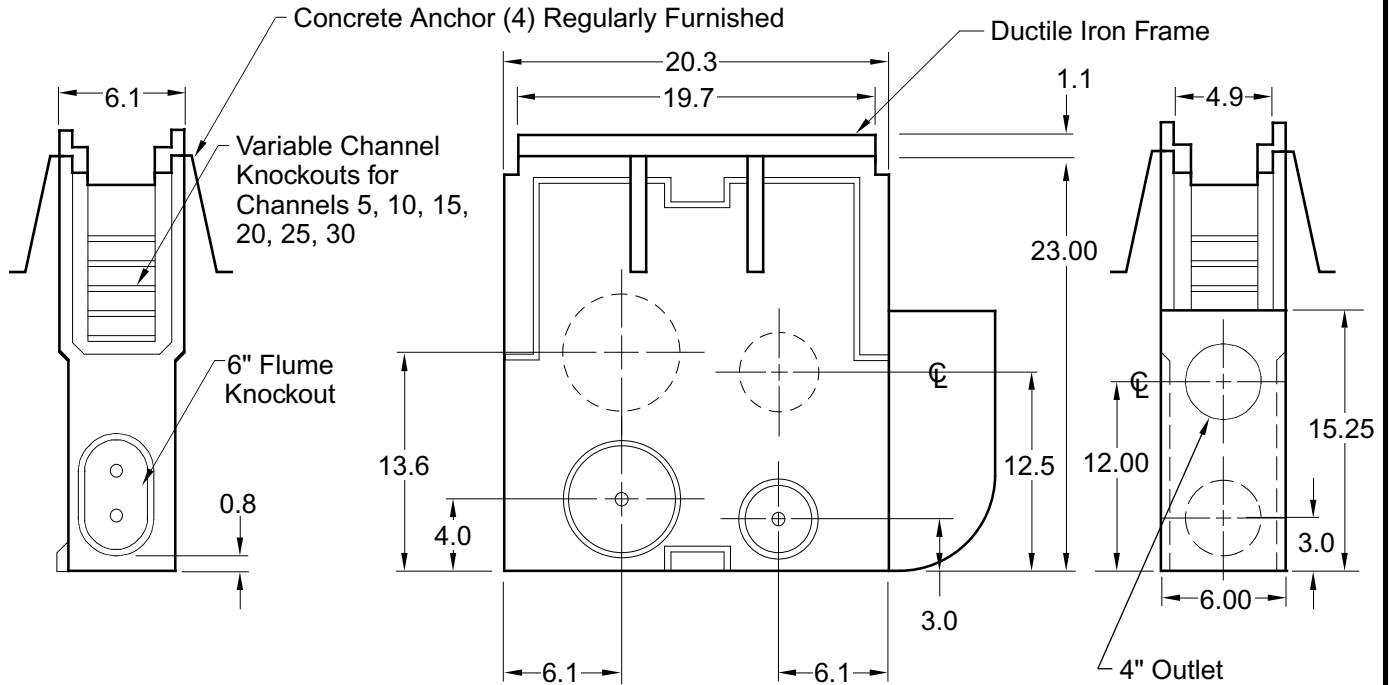


SMITH® JAY R. SMITH MFG. CO.
 DIVISION OF SMITH INDUSTRIES, INC.
 POST OFFICE BOX 3237
 MONTGOMERY, ALABAMA 36109-0237 (USA)
 TEL: 334-277-8520 FAX: 334-272-7396 www.jrsmith.com

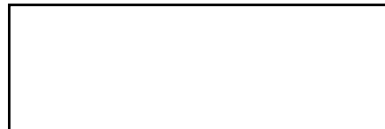


LOCATION

9816 CATCH BASIN w/FOUL AIR TRAP ON END



NOTE:
 Catch basin requires a minimum of 4" of concrete or slab thickness, whichever is greater, around and under complete unit.



BOTTOM VIEW

VARIATIONS:

- Foul Air Trap End
- Foul Air Trap Side
- Galvanized Sediment Bucket
- Plastic Sediment Bucket
- Stainless Sediment Bucket
- End Cap
- Cast Iron Grate
- Ductile Iron Grate
- End Frame

REGULARLY FURNISHED:

Precast Polymer Concrete Catch Basin with Preformed 4" and 6" Knockouts and Ductile Iron Frame and (4) Galvanized Concrete Anchors. Supplied with Secured Grate Per Your Specifications.

OPTIONAL MATERIALS:

- Vinylester Resin



DRAWING NUMBER a9816-CB-TE SIZE A SCALE: NONE DATE: 12-19-97 APPROVED BY: CHECKED BY: DRAWN BY: EMB	C	SMITH® JAY R. SMITH MFG. CO. DIVISION OF SMITH INDUSTRIES, INC. POST OFFICE BOX 3237 MONTGOMERY, ALABAMA 36109-0237 (USA) TEL: 334-277-8520 FAX: 334-272-7396 www.jrsmith.com				MEMBER OF: 		LOCATION	
	9816 CATCH BASIN w/FOUL AIR TRAP ON END								
	<p>NOTE: Catch basin requires a minimum of 4" of concrete or slab thickness, whichever is greater, around and under complete unit.</p> <div style="text-align: center;"> BOTTOM VIEW </div> <p>REGULARLY FURNISHED: Precast Polymer Concrete Catch Basin with Preformed 4" and 6" Knockouts and Ductile Iron Frame and (4) Galvanized Concrete Anchors. Supplied with Secured Grate Per Your Specifications.</p> <p>OPTIONAL MATERIALS: <input type="checkbox"/> Vinylester Resin</p> <div style="text-align: right;"> <p>VARIATIONS:</p> <ul style="list-style-type: none"> <input type="checkbox"/> Foul Air Trap End <input type="checkbox"/> Foul Air Trap Side <input type="checkbox"/> Galvanized Sediment Bucket <input type="checkbox"/> Plastic Sediment Bucket <input type="checkbox"/> Stainless Sediment Bucket <input type="checkbox"/> End Cap <input type="checkbox"/> Cast Iron Grate <input type="checkbox"/> Ductile Iron Grate <input type="checkbox"/> End Frame </div>								
	FIGURE NUMBER 9816-CB-TE	C B A	9-5-02 05/17/01 8-17-98	Added New ACO Logo Added Concrete Anchors Removed Bottom Knockout	RN JJ CMD	PJ	WEIGHT POUNDS	VOLUME CUBIC FEET	FIGURE NUMBER 9816-CB-TE
REV.	DATE	DESCRIPTION			BY	CKD. BY			

WE CAN ASSUME NO RESPONSIBILITY FOR USE OF SUPERSEDED OR VOID DATA

DIMENSIONS ARE SUBJECT TO MANUFACTURERS TOLERANCE AND CHANGE WITHOUT NOTICE