

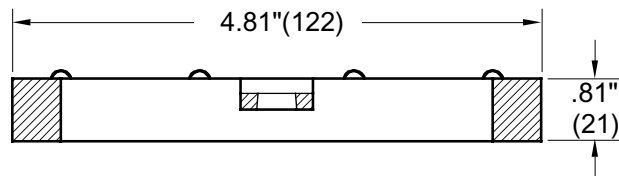
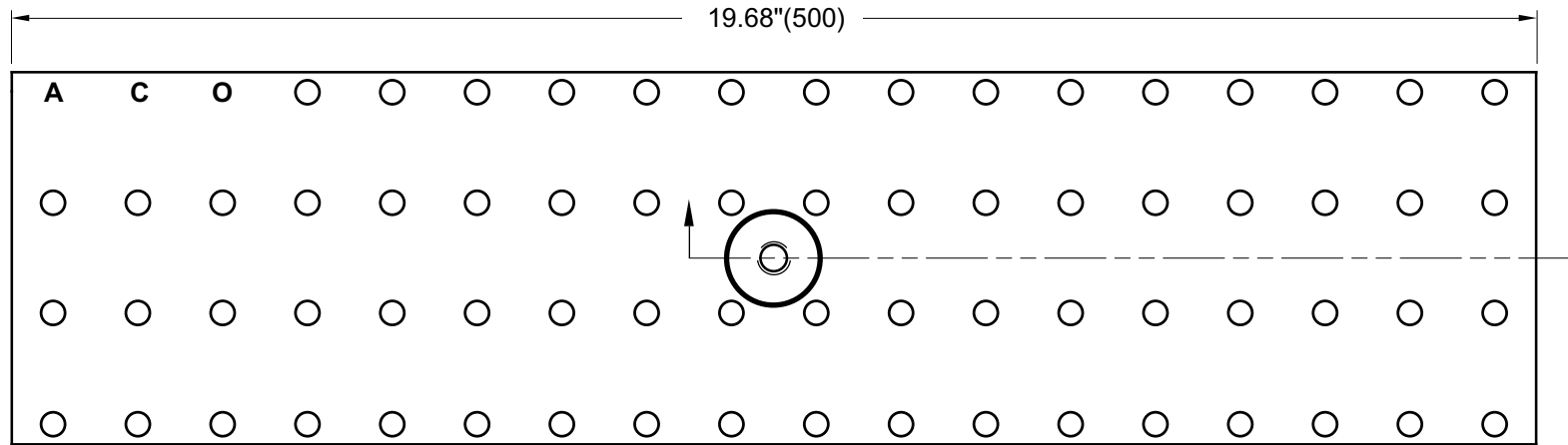
FIGURE NUMBER	9870-456D-MS	DRAWN BY: JJ	CHECKED BY: MD	APPROVED BY: PJ	DATE: 03/24/05	SCALE: NONE	SIZE A	DRAWING NUMBER a9870-456D-MS	
---------------	---------------------	-----------------	-------------------	--------------------	-------------------	----------------	------------------	---------------------------------	--

DIMENSIONS ARE SUBJECT TO MANUFACTURERS TOLERANCE AND CHANGE WITHOUT NOTICE

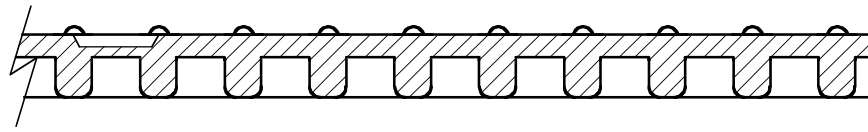
WE CAN ASSUME NO RESPONSIBILITY FOR USE OF SUPERSEDED OR VOID DATA

9870-456D-MS DUCTILE IRON SOLID EXTRA HEAVY DUTY COVER

Extra Heavy Duty, DIN 19580 Class E - 135,000 lbs - 2,788 psi
For Commercial Solid Tire Traffic Patterns, Forklifts and Impacts from Steel Struts or Metal Wheels.



END VIEW SECTION



SIDE VIEW SECTION



REGULARLY FURNISHED:
 Black Duco coated 1/2 Meter
 Ductile Iron Solid Cover.

VARIATIONS:
 811LD Locking Device

NOTE: Dimensions in
 parentheses are mm.

SMITH® JAY R. SMITH MFG. CO.®
 DIVISION OF SMITH INDUSTRIES, INC.
 POST OFFICE BOX 3237
 MONTGOMERY, ALABAMA 36109-0237 (USA)
 TEL: 334-277-8520 FAX: 334-272-7396 www.jrsmith.com



REV.	DATE	DESCRIPTION	BY	CKD. BY